

# HIGHLIGHT HL-SPSHB

## Installation Manual



## **HIGHLIGHT HL-SPSHB**

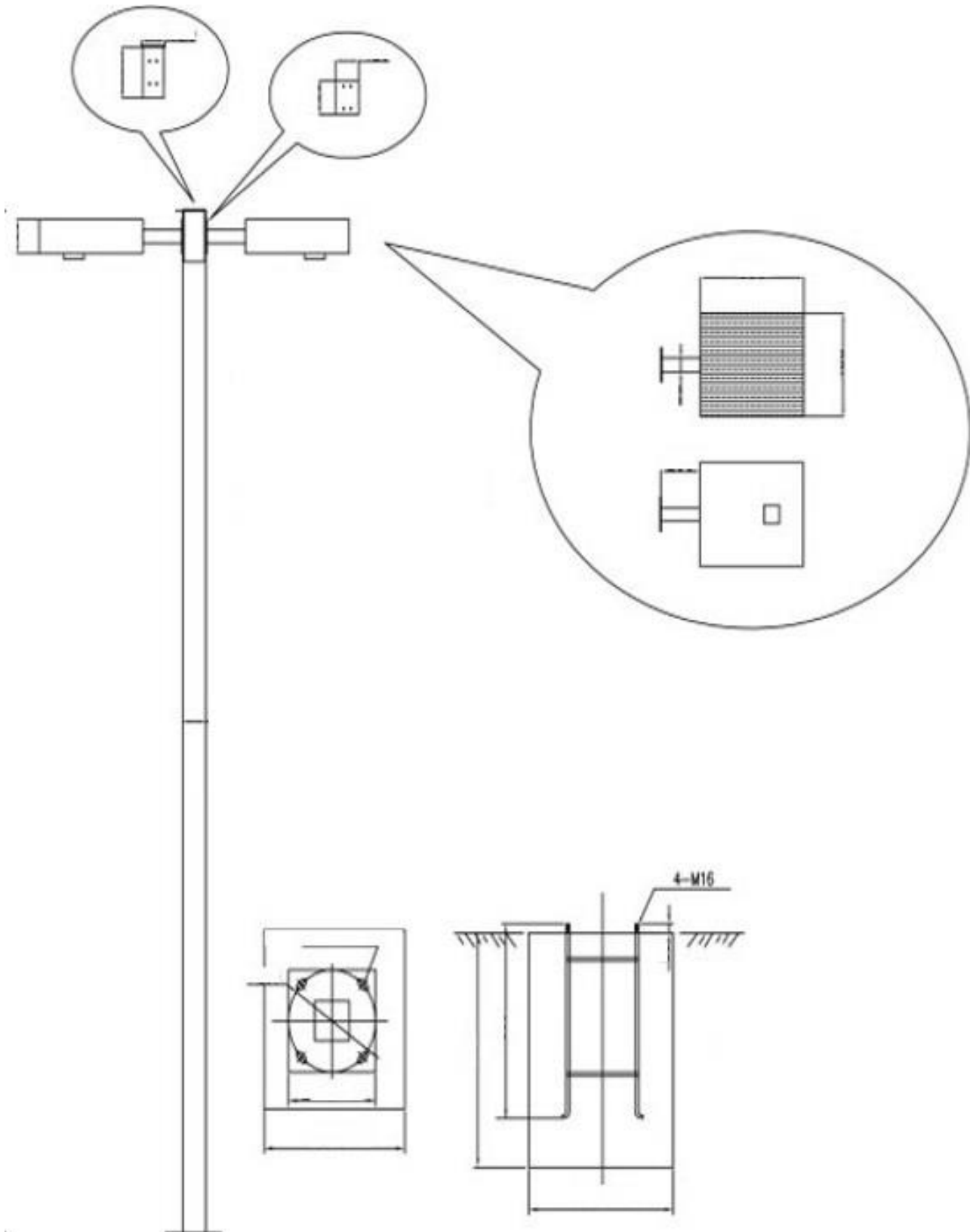
### **ALL IN ONE SHOEBOX SOLAR LIGHT**

---

#### **User's Manual & Instruction**

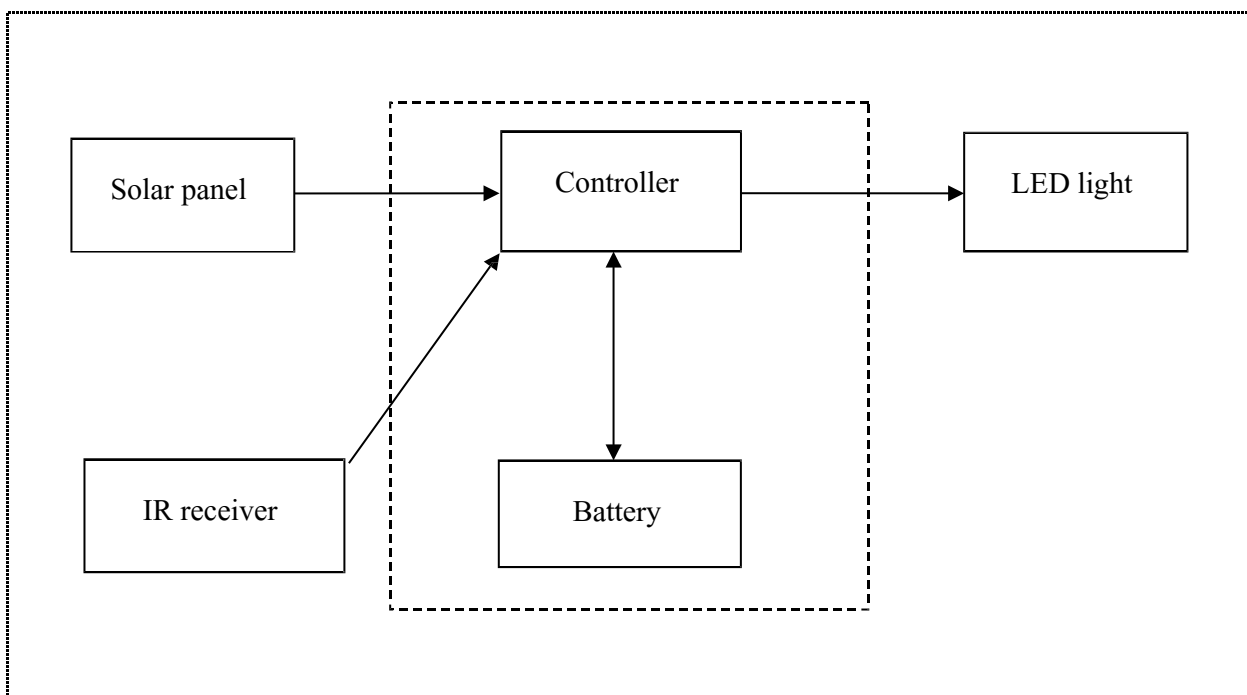


## Product Image



## Work principle

Under sunshine, solar panel convert energy to battery storage, then output via controller, drive LED light power as below.



## **Installation**

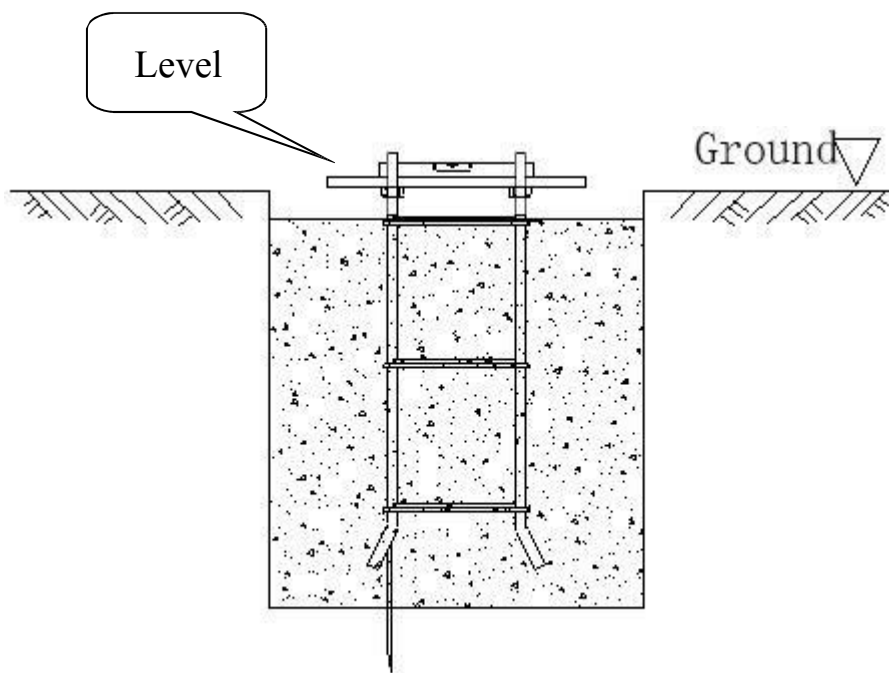
Before installation, prepare wrench, thin steel to drag off cable from inside of pole, protect pads etc to protect pole and solar panel.(better to install under good sunshine)

- 1 Use screws and bolt to fix both side LED shoebox onto both side 15Feet Aluminum pole;
- 2 After 2pcs LED fixtures fixed onto pole, put flange of pole to anchor bolt as below concrete constructions;
- 3 Remove film of solar panel, light will turn off at day and power on at night automatically.

## Concrete and anchor bolt installation

✂ Prepare tape, hoe, leveling ruler, shovel etc tools.

- 1 Place the cage in the ditch, and measure the position and height, to ensure that the concrete pouring height, the side of the cage and the direction of the road parallel.
- 2 with concrete cage poured in the pit, reserved screw column 80mm or so, with a utility knife will be wrapped in the cage tape removal, in the foundation of the four screws on each lock a nut, put on the horizontal
- 3 Measure the levelness with a level, and make the lower surface of the horizontal pad parallel to the floor surface by adjusting the height of the nut.
- 4 After the adjustment, remove tools such as the horizontal pad and level.



## **Pole installation**

✂ prepare wrench before installation.

1. Before pole installation, confirm lamp and solar panel position. connection of solar panel towards back side of sunshine) ;
2. Fix pole on anchor bolt;
3. Place flat washer through stud on whole lamp base and secure with nut lock. Use the pendant to adjust to ensure that the light pole is installed vertically.
4. Fix cover on anchor bot ;

## **Notice**

- solar-powered LED street lamps run on the sun, and should be installed wherever possible in areas with good sunlight.
- Installation environment should not be shade or building shade, otherwise it will cause the lack of solar power and turn off the lights, long-term on the service life of lamps and lanterns will also bring adverse effects.
- take care to install the whole light, preventing it from colliding with the thin-film solar panel and causing damage.
- lamp and solar pane surface are fragile and cannot be touched by sharp objects or struck by gravity.



## Contact us



+1.201.490.4499

Toll free: 1.888.333.SOLAR (7652)



[contact@solarpathusa.com](mailto:contact@solarpathusa.com)



[www.solarpathusa.com](http://www.solarpathusa.com)