

# HIGHLIGHT BUS-DL

## Installation Manual



## Why us?

### **Innovative Technology**

High-efficiency solar and advanced LEDs deliver superior performance, long life, and maximum ROI.

### **Photometric**

We conduct photometric measurements on all our products to ensure optimal performance and compliance with industry standards

### **Versatile Lightning**

We designs and install solar-powered lightning systems tailored for all kind of locations such as streets, parks, pathways, homes, etc.

### **Global Reach**

Worldwide success proves our adaptability and regulatory expertise.

### **Sustainable Savings**

These solutions enhance safety, promote sustainability and providing significant energy and cost saving.

### **Warranty**

SolarPath is dedicated to delivering architectural and commercial-grade solar lighting that can be customized to meet specific client requests, both in technical specifications and aesthetic design, ensuring a perfect fit for a diverse range of needs.

## Introduction

Outdoor solar lighting systems convert sunlight into electricity and store it in batteries for night time lighting. Solar lights are easy to install and do not require trench digging and wiring, greatly saving your installation costs.

## Important

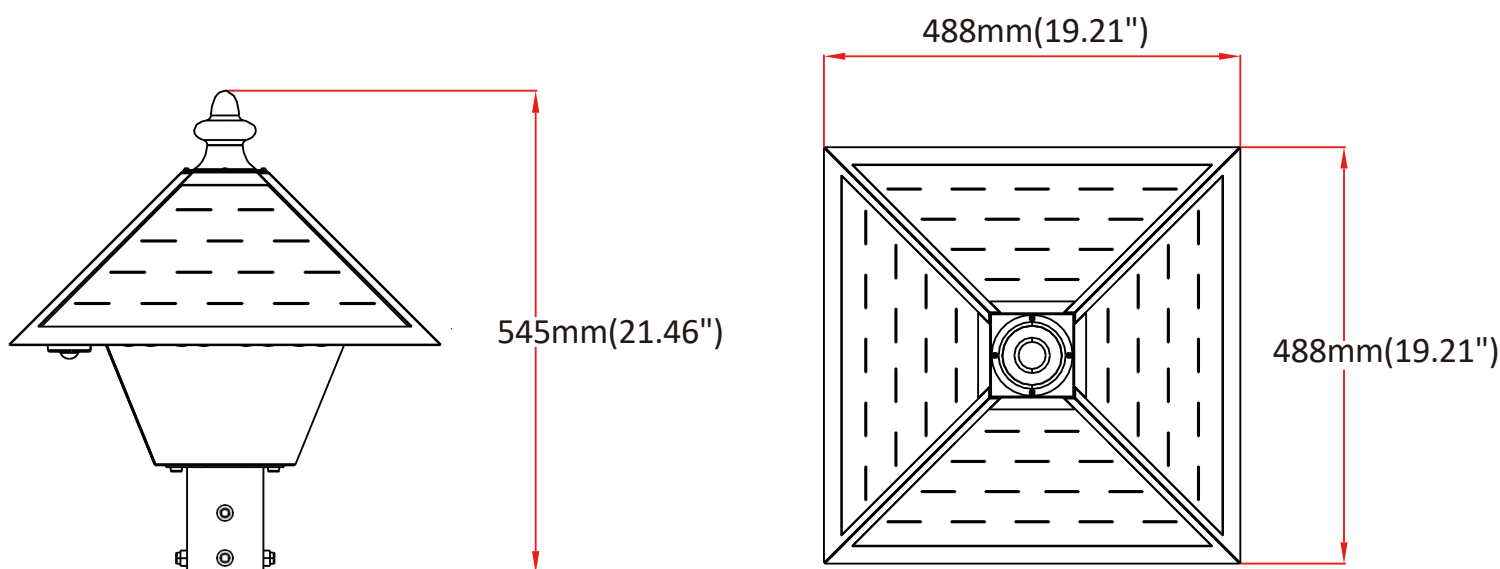
To avoid over discharge of the battery during storage, please recharge the light fixture every 3 months. (Press the switch on when charging and using a plug-in charger (sold separately) to charge)

The average direct sunshine exposure in the installation area should be at MINIMUM 3.5h/day to ensure the full functionality of the lighting fixture.

Always orient the solar panel toward the equator (e.g., south in the northern hemisphere). Always have a tilt angle of at least

45° to avoid dust accumulation (0°=horizontal plane).

**Please read this instruction manual carefully to ensure proper installation. Please keep this instruction manual for future use.**



## Battery Notes

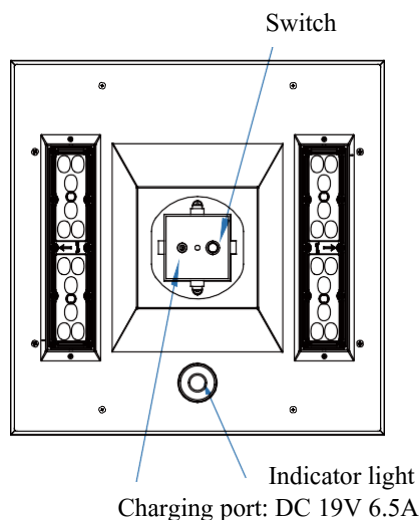
### Battery Notes

Fully charging the battery may take between 4 to 10 hours.

The rechargeable battery provides continuous operation for up to 33 hours at full power.

The controller adjusts the light output based on a selected percentage on the remote relative to battery capacity, rather than the maximum LED output.

Auto-heating function(optional):Heating starts when the battery temperature at 0°C/32°F and stops at 6.5°C/43.7°F.(only when charging)



## Warning

### Installation

Installation must comply with the State and National Electrical Codes.

Before installation:

Please check the battery to see if it's fully charged. Please proceed to the installation on sunny days. Please see the indicator color guide on above Please ensure the light pole foundation is solid enough to withstand the lighting fixture.

Please press the ON/OFF key in the remote control and check whether the red indicator flashes on the indicator.

Normal Outdoor Operation:

- 1.The light has been charged and ready to work (Stand by Mode): Solid red indicator
- 2.The battery has less than 10% charge:Green indicator flashes
- 3.The light turns on (Working Mode): Solid green indicator
- 4.The battery is charging (Stand by Mode):Red indicator flashes

### Storage

To avoid over discharge of the battery during storage, please recharge the light fixture every 3 months. (Press the switch when charging and use a dedicated charger (sold separately) to charge, reset the switch when done.)

Please cover the panel and press the ON/OFF key of the light and then check if the light module turns on, generally within 1 minute.

If the light is still off,try the ON/OFF key on the remote one more time.

If the indicator flashes green or fully doesn't response,the battery power is low. If the indicator quickly flashes red,please contact your local distributor.

Please select the necessary operation mode with there mote control. Please refert to the instruction manual for the remote control for further information.

### After installation:

The lighting fixture will automatically turn on at night and turn off during daylight.

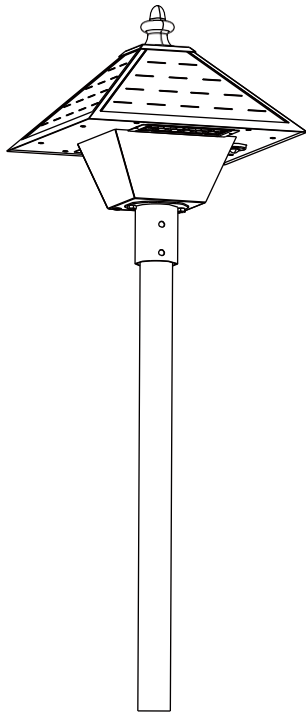
### Important

Always orient the solar panel facing the equator (e.g. facing south if innorthern hemisphere).

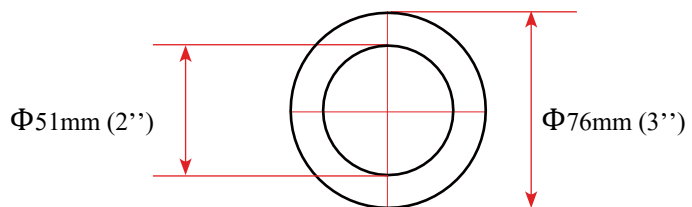
Always have a tilt angle of at least 45° to avoid dust accumulation (0°=horizontal plane).

## Installation Options

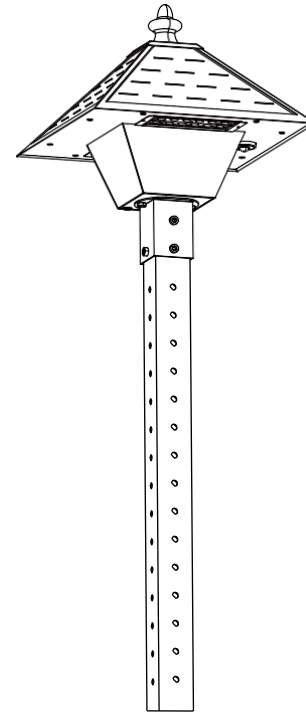
A. Pole Mount—Round



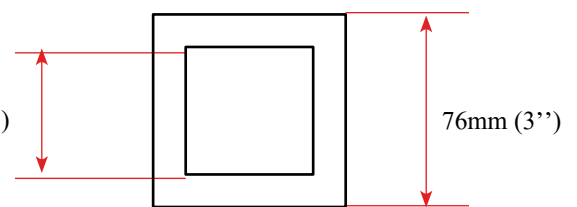
Round Pole Diameter



B. Pole Mount—Square



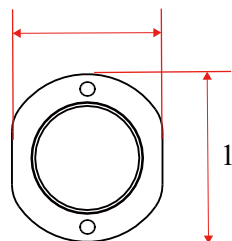
Square Pole Dimension



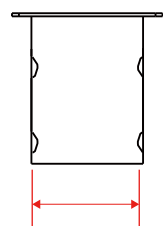
## Installation

### Pole Mount—Round

120mm (4.72'')



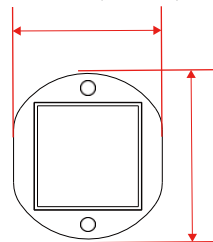
134mm/(5.28'')



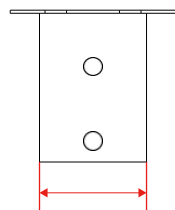
Φ89mm/(3.50'')

### Pole Mount—Square

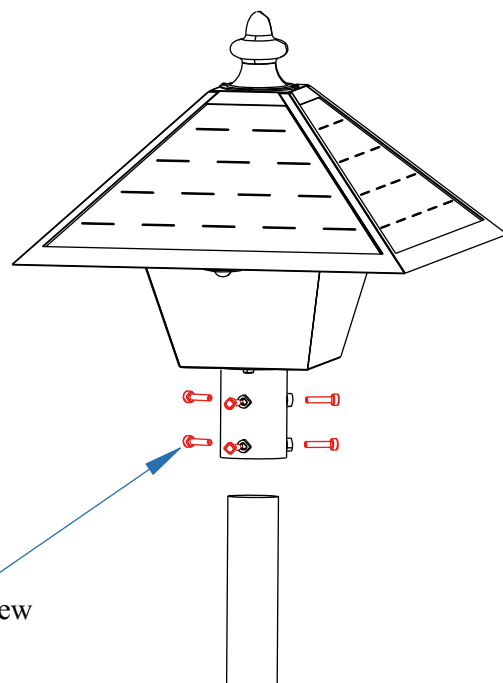
120mm(4.72'')



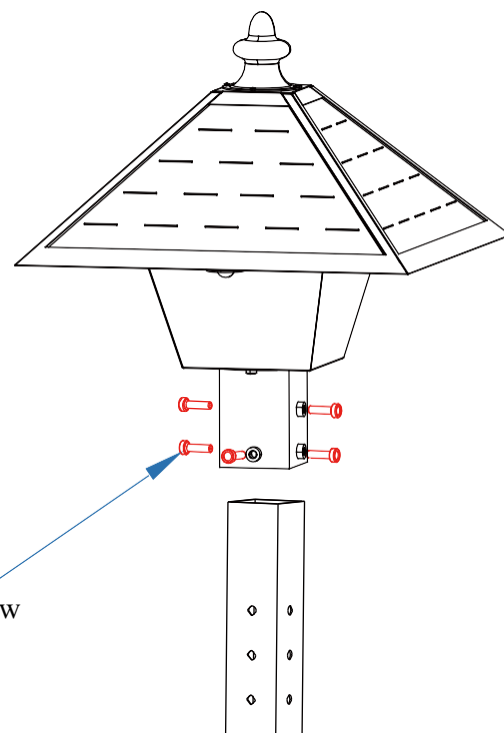
134mm/(5.28'')



86mm/(3.39'')

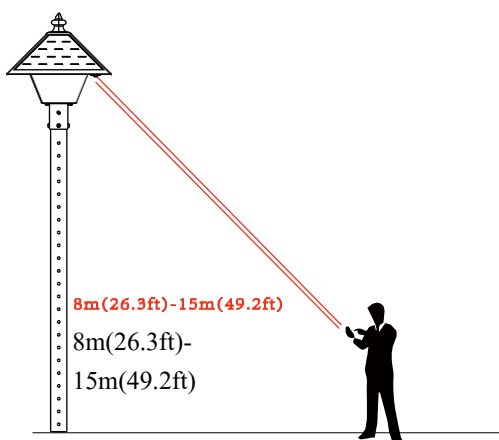
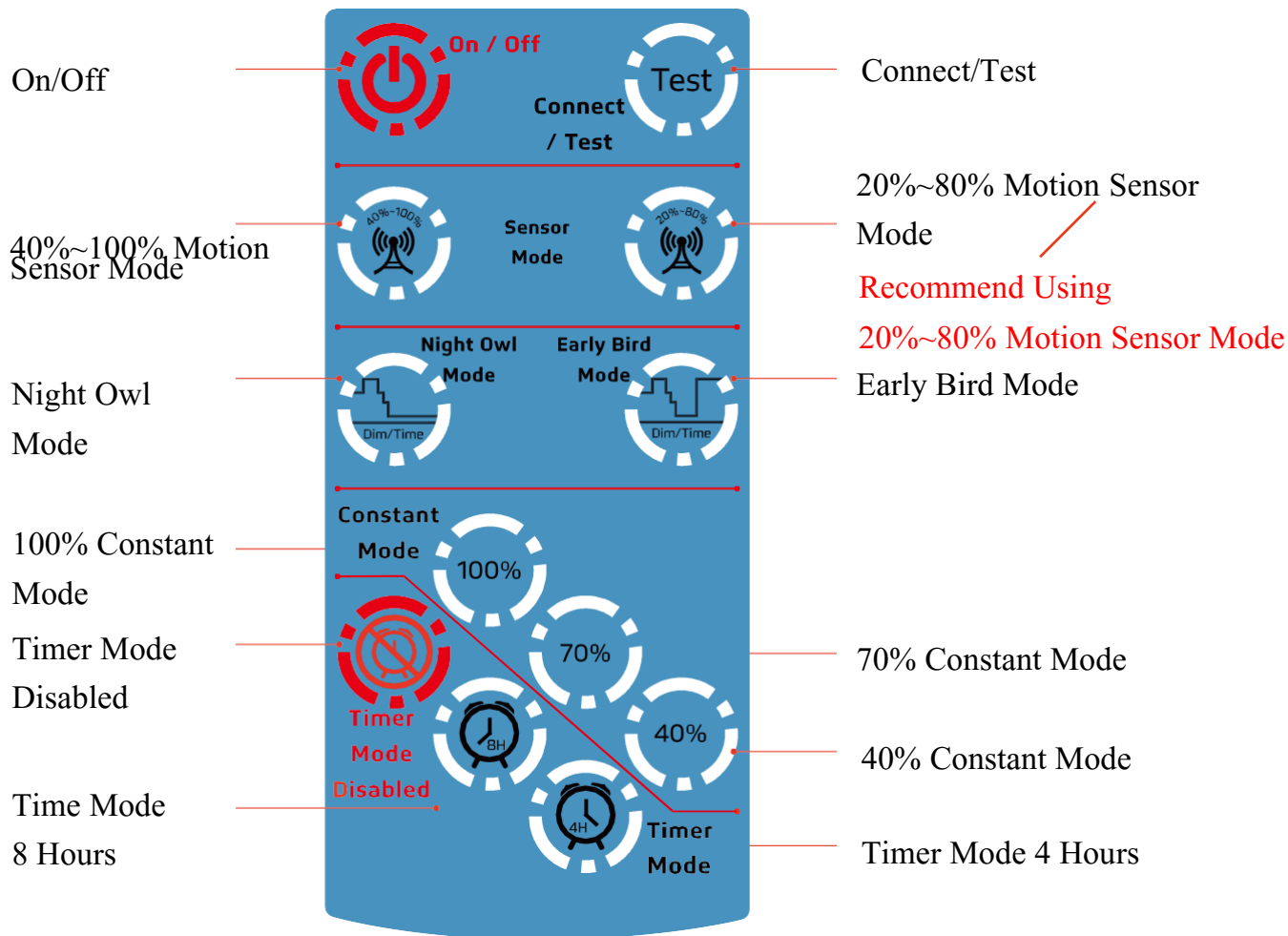


Tightened with 6pcs screw



Tightened with 6pcs screw

## Remote Control Guide



The range of the remote control to the indicator is 8m(26.3ft) (Day time) to 15m (49.2ft) (Night time). Because the sunlight will impact the signal of the remote control, we suggest our users to set up the mode before they install the light.

### 1.ON/OFF

When ON/OFF is pressed, the indicator flashes red if the fixture is fully charged and ready to work. The indicator flashes green if the battery power is less than 10%. If the indicator doesn't flash upon restart, contact your local distributor.

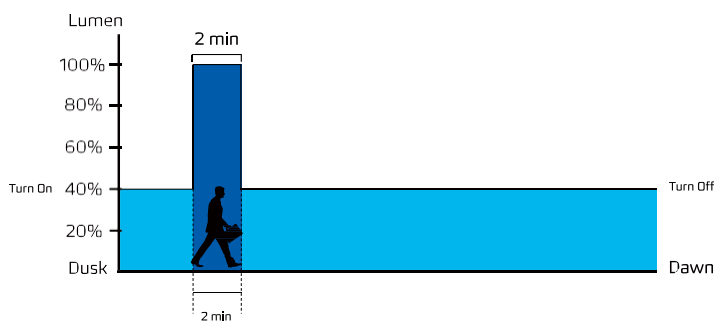
### 2.Test

To test, press it once. If the test is successful, the fixture will light up to 20% brightness, dim up to 80% brightness, and prepare for the next steps. If the test is unsuccessful, the fixture is either out of charge or turned off. Please check the condition of the light and try again. Testing time lasts 10 seconds, and then it goes back to the previous mode in use.

## Remote Control Guide

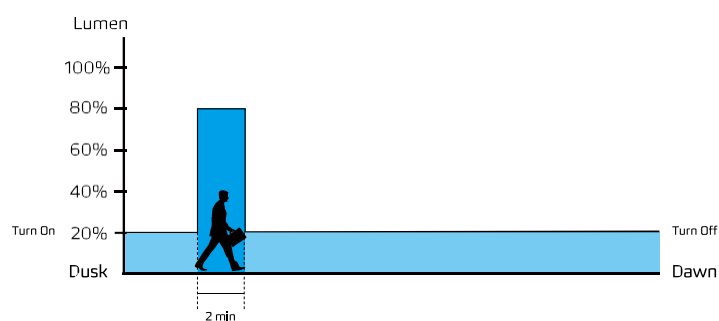
### 3. Induction Mode 40% - 100%:

Constant 40% brightness (turn on at dusk, turn off at dawn); the light goes on 100% brightness for 2 mins when motion is detected.



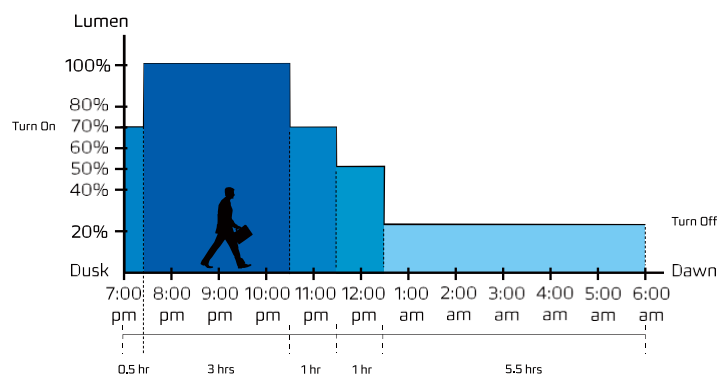
### 4. Induction Mode 20% - 80% (Default):

Constant 20% brightness (turn on at dusk, turn off at dawn); the light goes on 80% brightness for 2 mins when motion is detected.



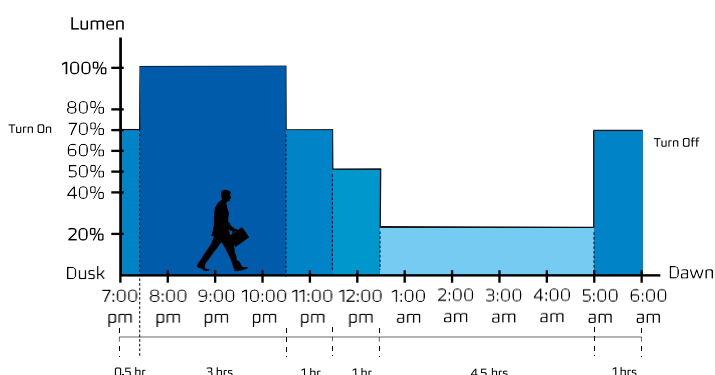
### 5. Night Owl Mode:

Based on night-time activities: 70% brightness for Hour 0 (Dusk)-0.5, 100% brightness for Hours 0.5-3.5, 70% brightness for Hour 3.5-4.5, 50% brightness for Hour 4.5-5.5, 20% brightness for Hours 5.5-11 (Dawn).



### 6. Early Bird Mode:

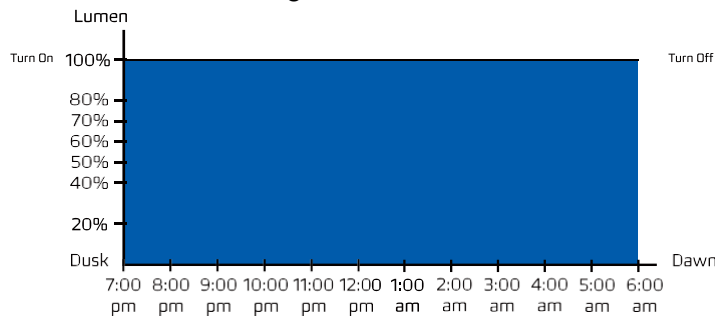
Based on night-time activities with increased brightness for early risers: 70% brightness for Hour 0 (Dusk)-0.5, 100% brightness for Hours 0.5-3.5, 70% brightness for Hour 3.5-4.5, 50% brightness for Hour 4.5-5.5, 20% brightness for Hours 5.5-10, 70% brightness for Hour 10-11 (Dawn).





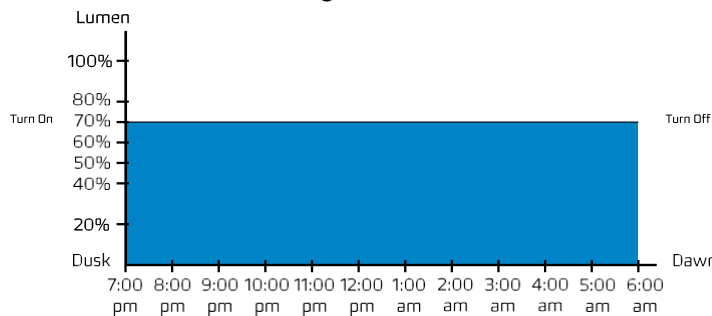
## 7.Constant Mode 100%:

100% brightness from dusk to dawn. Suitable for areas and seasons with sufficient sunlight.



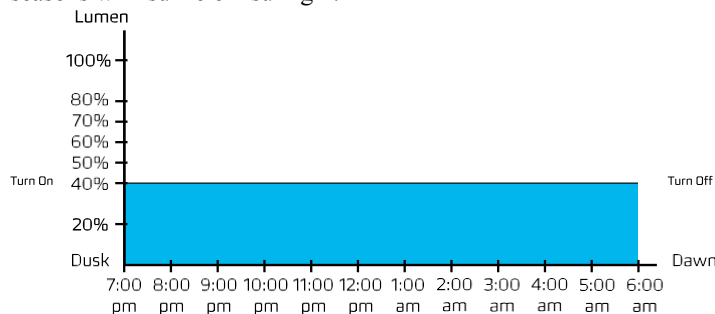
## 8.Constant Mode 70%:

70% brightness from dusk to dawn. Suitable for areas and seasons with sufficient sunlight.



## 9. Constant Mode 40%:

40% brightness from dusk to dawn. Suitable for areas and seasons with sufficient sunlight.

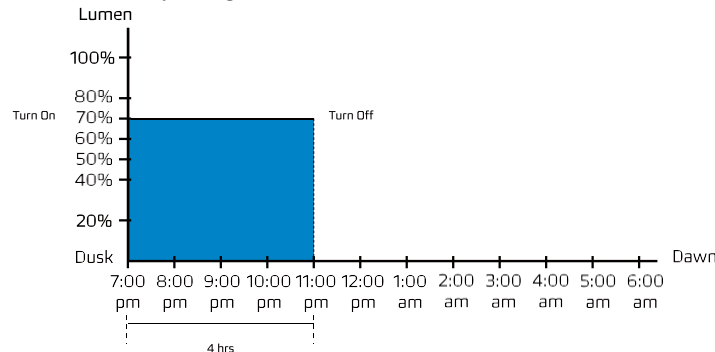


## 10. Timer Disabled:

Press this button to turn off Timer Mode; Settings go back to the previous mode that was set before timer mode.

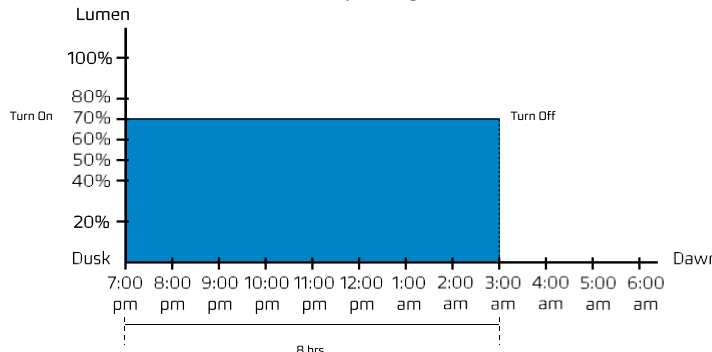
## 11. Timer Mode 4 Hours:

Light turns off 4 hours after it turns on (dusk). For example: Press this button at any time; if the light turns on at 7pm, it will turn off at 11 pm. It will repeat the same schedule hereafter until it is canceled by using 10 Timer Disabled.



## 12. Timer Mode 8 Hours:

8 Hours Light turns off 8 hours after turning on (dusk). For example: Press this button at any time; if the light turns on at 7 pm, it will turn off at 3 am. It will repeat the same schedule hereafter until it is canceled by using 10 Timer Disabled.



### Important

Dusk and dawn time can vary for different locations and seasons. The sensors in our products will monitor the light levels where it is installed. The time period shown in the chart above is just an example to help you understand the different lighting modes.

Solar Bus Stop Light products come with a 5-year limited warranty!

Please feel free to contact us if you have any questions during use. We are happy to provide you with any assistance. Thank you!





## Contact us



+1.201.490.4499

Toll free: 1.888.333.SOLAR (7652)



[contact@solarpathusa.com](mailto:contact@solarpathusa.com)



[www.solarpathusa.com](http://www.solarpathusa.com)