

SP-SWDLP Specifications



Why us?

Innovative Technology

High-efficiency solar and advanced LEDs deliver superior performance, long life, and maximum ROI.

Photometric

We conduct photometric measurements on all our products to ensure optimal performance and compliance with industry standards

Versatile Lighting

We design and install solar-powered lighting systems tailored for all kinds of locations such as streets, parks, pathways, homes, etc.

Global Reach

Worldwide success proves our adaptability and regulatory expertise.

Sustainable Savings

These solutions enhance safety, promote sustainability and provide significant energy and cost savings.

Warranty

SolarPath is dedicated to delivering architectural and commercial-grade solar lighting that can be customized to meet specific client requests, both in technical specifications and aesthetic design, ensuring a perfect fit for a diverse range of needs.

SolarPath™ – Solar Wrapped Decorative Lighting Pole String Decorative Lighting Solution



The SolarPath Solar Wrapped Pole is designed for decorative and functional illumination using integrated flexible solar cells. The pole structure incorporates CIGS flexible cylindrical solar wraps, walkways, plazas, and community projects. It powers string decorative LED lighting, making it ideal for parks.

Technical specification

Pole Material	Steel pole with integrated flexible solar wrap
Pole Height	Up to 25'
Pole Section	Up to 540W (CIGS flexible solar wrap)
Lighting	30 LED bulb lights (can be customized)
Lamp Power	Each LED bulb 1W, total 30W per pole installation (can be customized)
Illumination Type	Decorative string lighting
Battery	Integrated, built inside the pole
Battery Type	Lithium battery (Maintenance- free)
Battery Capacity	Up to 100AH/25.6V
Controller	Smart solar charge controller
Operation Profile	Can be customized , depend on solar radiation
Applications	Parks, plazas, pedestrian walkways, landscape projects, HOAs

FLEX SERIES -1.7N

CIGS Flexible Modules:
High Power Density in a Flexible Form Factor

Solar cylindrical wrap pole panel data sheet

Key Features

- Record efficiency level in a CIGS flexible form factor.
- Low installed weight at less than 2.9 kg/m^2 ($<0.6 \text{ lb/ft}^2$)
- No penetration, ballast or racking required.
- Applicable for high wind load and high shading losses.
- Bypass diodes reduce PV system shading losses.
- Directly bonds to many approved surfaces.

Reliability and safety

- IEC 61646, IEC 61730-1 & -2, IEC 61701, IEC 62716, DEWA.
- UL 1703, ULC ORD C 1703, UL 2703.
- 5 years workmanship.
- 10/25 years warranty against power loss.



FLEX SERIES

SP-FWSP- CIGS MODULE SERIES

Electrical performance AT STC¹

Nominal Power P _{MPP}	(W)	85	90	100	150	180
Power Output Tolerance	(W)	+5/-0	+5/-0	+5/-0	+5/-0	+5/-0
Maximum Power Voltage V _{MPP}	(V)	18.44	24.84	18.2	18.8	22.23
Maximum Power Current I _{MPP}	(A)	4.72	3.71	5.49	7.96	8.08
Open Circuit Current V _{OC}	(V)	22.7	30.64	22.47	22.5	26.5
Short Circuit Current I _{SC}	(A)	5.28	4.19	5.93	8.38	8.38
Maximum Series Fuse Rating	(A)	10			15	
Maximum System Voltage (IEC/UL)	(V)	1000/600				

¹Standard Test Conditions (STC): 1000 W/m², 77°F cell temperature, AM 1.5 spectrum.

Thermal Characteristics

NOCT	(°F)	118.4
Temperature Coefficient P _{MPP}	(%/°F)	32.68
Temperature Coefficient V _{OC}	(%/°F)	32.50
Temperature Coefficient I _{SC}	(%/°F)	32.01

Physical and Mechanical Specifications

Length	78.74"	59.05"	59.05"	59.05"	68.89"
Outside Diameter	4.72"	5.51"	6.29"	8.62"	8.62"
Inside Pole Diameter	No need	No need	<4.25"	<4.49"	<4.49"
Thickness with mold	0.09"	0.09"	0.09"	0.17"	0.17"
Weight with aluminum mold	22.66lbs	18.62lbs	20.83lbs	31.96lbs	37.36lbs
Junction Box Type	IP68				
Cell Type	Copper Indium Gallium Di selenide (CIGS)				
Certifications	UL 1703, ULC ORD C1703, UL 2703, IEC 61646, IEC 61730-1 & -2, IEC 61701, IEC 62716, DEWA				



Key Features

- Flexible CIGS solar panels wrapped around the pole (high efficiency, durable)
- Battery built-in
- No external box required
- Decorative string lighting powered entirely by solar energy
- Each bulb rated at 1W, providing 30W total per installation
- Low maintenance and long service life
- Sustainable, grid-independent lighting solution

Applications

USES AND APPLICATIONS GUIDE

Parks

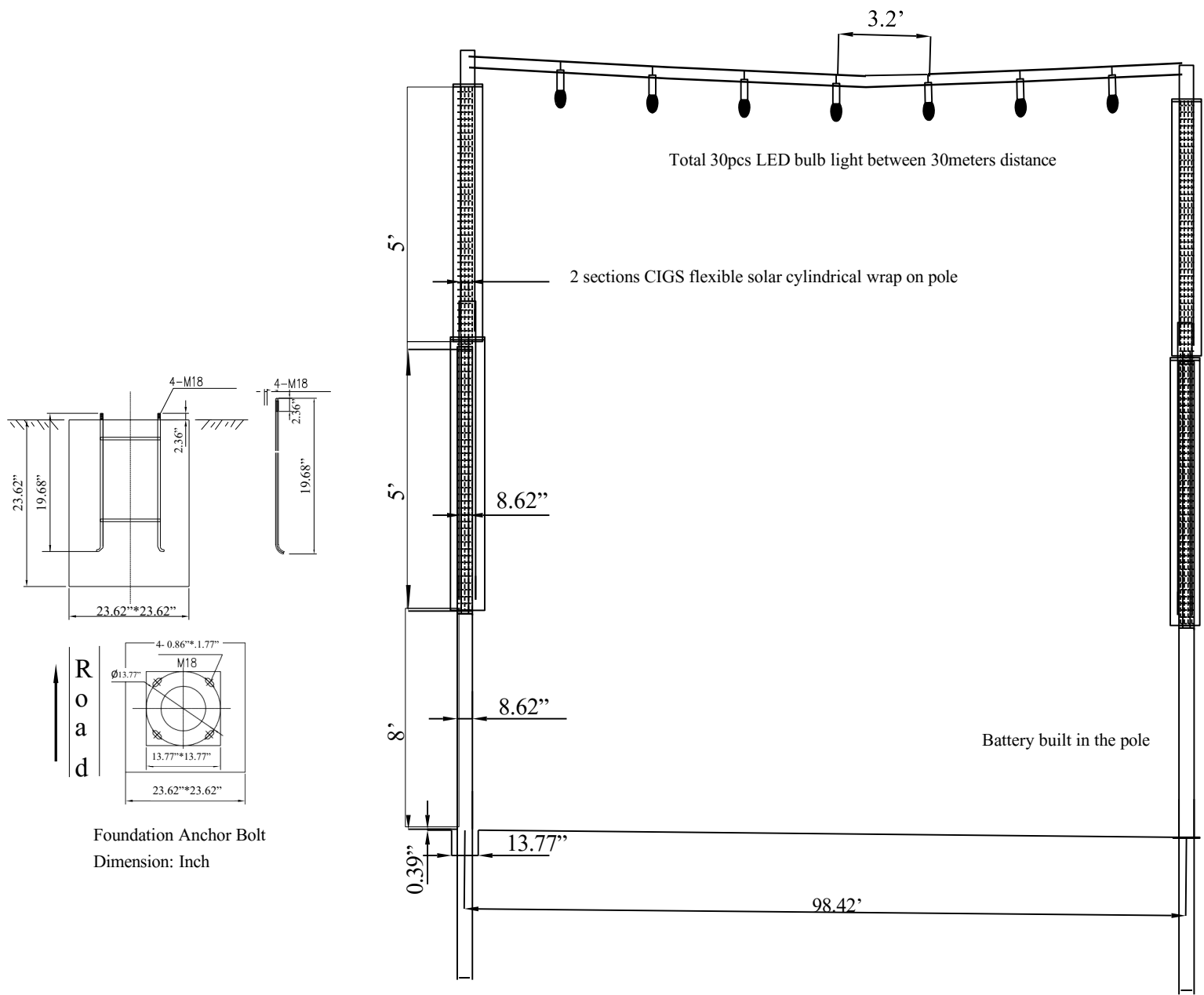
Plazas

Pedestrian walkways

Landscape projects

HOAs

Example drawing



Dimension: Ft/ Inch

Ordering Guide

Ordering Guide: EXAMPLE: SP-SWDLP-A-85W-30-30W-30K-30AH-GR

Model	Solar Panel Quantity	Solar Panel	String LED Bulb Qty.	Led Power	Led Color Temp	Battery capacity	Pole Color
SP-SWDLP	A - 1 panel	85W	30 Pcs	1W	30K	30AH	GR- Grey
	B - 2 panels	90W	*Can be customized		40K	40AH	BLK - Black
	C – 3 panels	100W			50K	50AH	(Other colors are available)
	D – 4 panels	150W			57K	60AH	
		180W				80AH	
						100AH	



Contact us



+1.201.490.4499

Toll free: 1.888.333.SOLAR (7652)



contact@solarpathusa.com



www.solarpathusa.com