

# LED LIGHT SRL

## Specifications



## Why us?

### **Innovative Technology**

High-efficiency solar and advanced LEDs deliver superior performance, long life, and maximum ROI.

### **Photometric**

We conduct photometric measurements on all our products to ensure optimal performance and compliance with industry standards

### **Versatile Lightning**

We design and install solar-powered lighting systems tailored for all kinds of locations such as streets, parks, pathways, homes, etc.

### **Global Reach**

Worldwide success proves our adaptability and regulatory expertise.

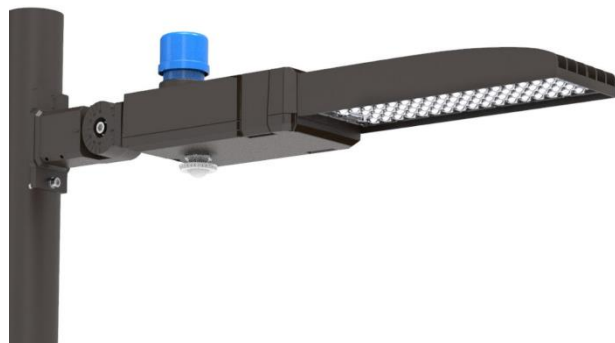
### **Sustainable Savings**

These solutions enhance safety, promote sustainability and providing significant energy and cost saving.

### **Warranty**

SolarPath is dedicated to delivering architectural and commercial-grade solar lighting that can be customized to meet specific client requests, both in technical specifications and aesthetic design, ensuring a perfect fit for a diverse range of needs.

## SRL Series



SRL series area light is perfect for outdoor area lighting, providing significant energy and maintenance savings while improving illumination performance.

## FEATURES & BENEFITS

- High lumen output and high mounting height solution.
- IP 66 Die cast housing
- Sleek low profile design, low EPA rating.
- Modular design, easy for installation, replacement and maintenance.
- Compartment release for wiring and service..
- Photocell and Motion sensor (optional).
- Mounting: 2.36 in standard mounting diameter.  
11 kinds of mounting options.
- Anti-Condensation Valve.
- Electrical/Control: 100-277VAC and 277-480VAC available.  
Surge protection: - 10kV Standard  
- 20kV Optional

## CERTIFICATIONS

ETL/DLC

## TECHNICAL PARAMETERS

<b>Power</b>	60-150W
<b>Input</b>	100-277V/277-480V
<b>PF</b>	>0.9
<b>L85</b>	>50,000H
<b>Operating Temperature</b>	-40°F- 104°F
<b>Efficacy</b>	140-160lm/W
<b>ANSI CCT</b>	3000K/4000K/5000K
<b>Min CRI</b>	≥70
<b>LED Module IP Rating</b>	IP66
<b>SPD</b>	Optional
<b>Motion sensor</b>	Optional
<b>Photocell</b>	Optional
<b>Optic (IESNA)</b>	Type II, Type III, Type IV, Type V
<b>Color Options</b>	Dark Bronze/Grey/Black/White

## SOLAR STREET LIGHT

---

### USES AND APPLICATIONS GUIDE

---

Streets Lighting

Parking Lots

Residential Roads

Public Parks

Sports Lighting

---

## ORDERING GUIDE

Example :SRL-60W-A-SLA-2-30K-BZ-00

Model (Nominal Power)	A/B	MOUNTING	OPTIC LENS	CCT (ANSI)	OPTIONAL COLOR	LIGHTING CONTROL
60W	A	SRA- 2.36 in Round Tenon	2-Type II	30K	★ BZ	00
80W	100-277V	SRB- 1.57in Round Tenon	3-Type III	40K	GR	Not required
100W	B	SRC- 1.96in Round Tenon	4-Type IV	50K	BLK	01
120W	277-480V	SRD- Square pole	5-Type V		WH	Photocell
150W	C	SRE- 3.93in Round pole				02
	12-24V	TRU- Trunnion				Motion Sensor
		SHA- 2.36in Round Tenon				03
		SHB- 1.57in Round Tenon				Smart Control
		SHC- 1.96in Round Tenon				
		SHD- Square and Round pole				
		SHE- Square and Round pole				



## Contact us



+1.201.490.4499

Toll free: 1.888.333.SOLAR (7652)



[contact@solarpathusa.com](mailto:contact@solarpathusa.com)



[www.solarpathusa.com](http://www.solarpathusa.com)