

SPFS-SC Wi-Fi/4G CAMERA USER MANUAL



Why us?

Innovative Technology

High-efficiency solar and advanced LEDs deliver superior performance, long life, and maximum ROI.

Photometric

We conduct photometric measurements on all our products to ensure optimal performance and compliance with industry standards

Versatile Lighting

We design and install solar-powered lighting systems tailored for all kinds of locations such as streets, parks, pathways, homes, etc.

Global Reach

Worldwide success proves our adaptability and regulatory expertise.

Sustainable Savings

These solutions enhance safety, promote sustainability and provide significant energy and cost savings.

Warranty

SolarPath is dedicated to delivering architectural and commercial-grade solar lighting that can be customized to meet specific client requests, both in technical specifications and aesthetic design, ensuring a perfect fit for a diverse range of needs.



Wifi/4G Camera User Manual

1. Download APP

- Scan the QR code to download the APP CamHipro from APP Store.

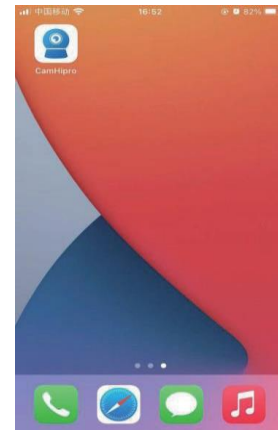


android



IOS

- You can get the APP as below.

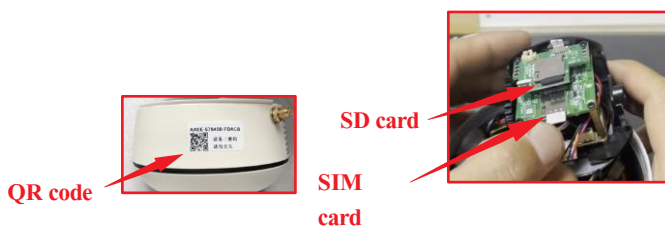


2. Connect The Device

- **Connect the power:** Turn on the switch behind the light body to start the camera.

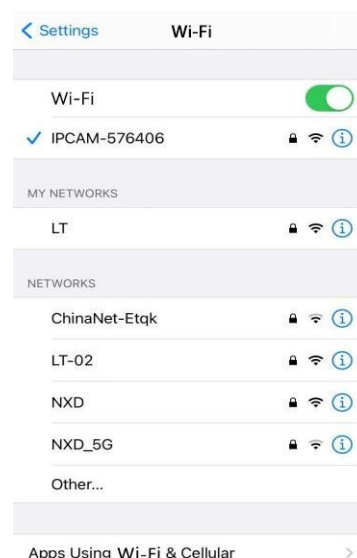


- 2. **OR 4G connection:** Insert the card into SIM slot, the flash indicates that the network is done successfully. Scan QR code which is labeled on camera, or input UID number manually to connect the camera.

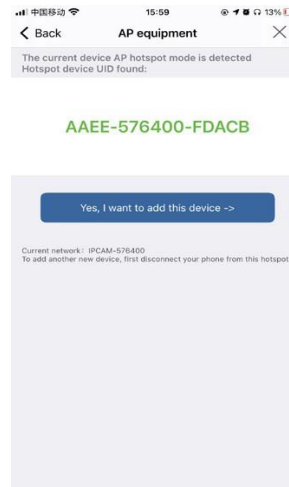
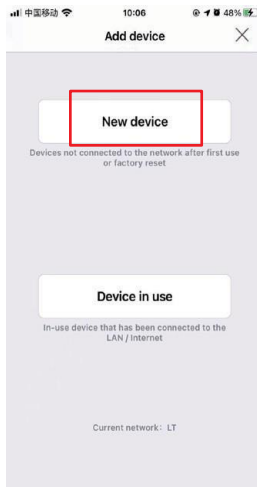
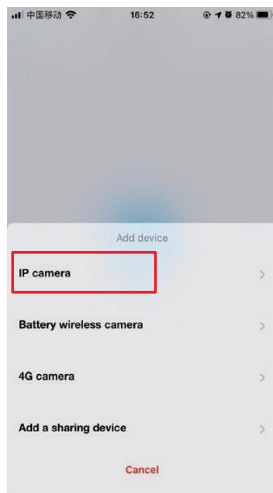


► Camera Connection :

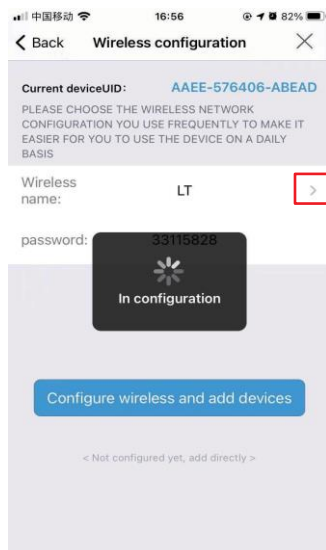
1. **Wifi connection:** Go to Setting WiFi in your mobile, find the wifi signal which name "Ipcam-xxx", password: 01234567, and connect it to your mobile. Please make sure the mobile should be close to the camera.



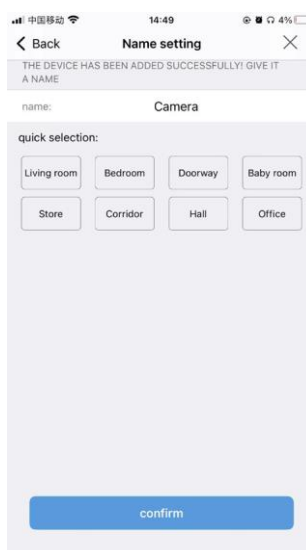
- **Add the device:** Open the APP, press “+” to add the camera, choose IP camera and New device in turn.



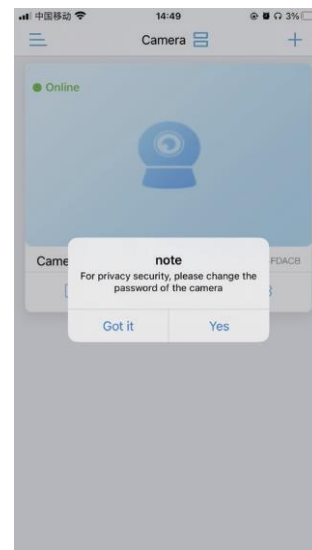
- **Indoor wifi connection:** Press “>” to find available WIFI hotspot and input the password, press “configure wireless and add devices” to get connected.



- **Name setting:** A loud voice from camera indicate successful connection. You can rename the camera according to the actuality.

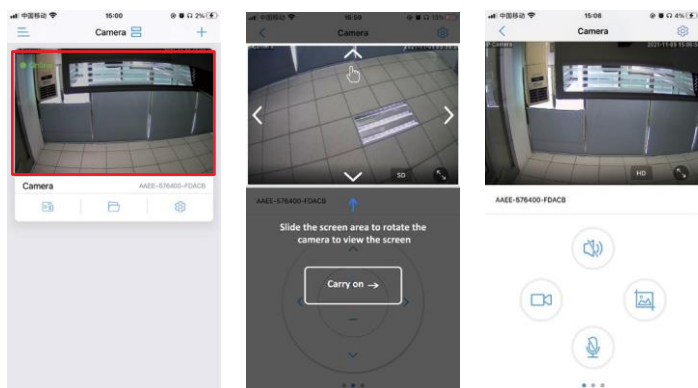


- **Revise original password:** The camera password must be changed, or the camera can't be used.



► 3. 360° watching video

Click the camera's name and you can see the function of the camera.



①

②

③



Click the microphone icon and you can talk remotely.



Click the voice icon that you can listen the voice from video.



Click the picture icon that you can have screen shot.



Click the video icon that you can save any video moment.

► 4. Alarm warning

The phone receives an alarm push message After detecting people and objects,It can record continuously for 24 hours, and detect people or objects, automatically alarm and record.



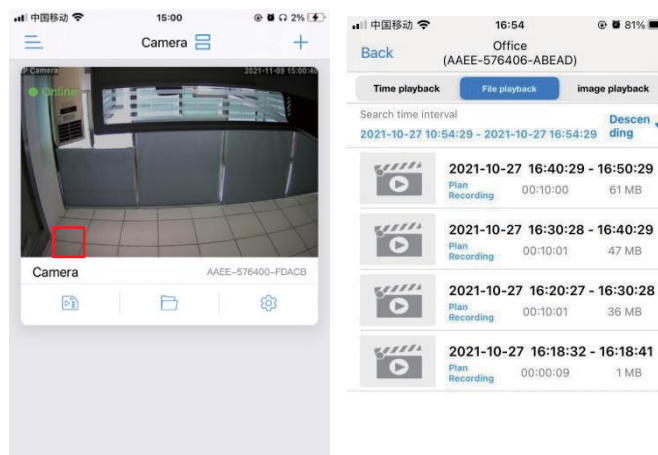
*2 million is for motion detection, and more than 2 million support motion detection and human form recognition.

► 5. About SD card

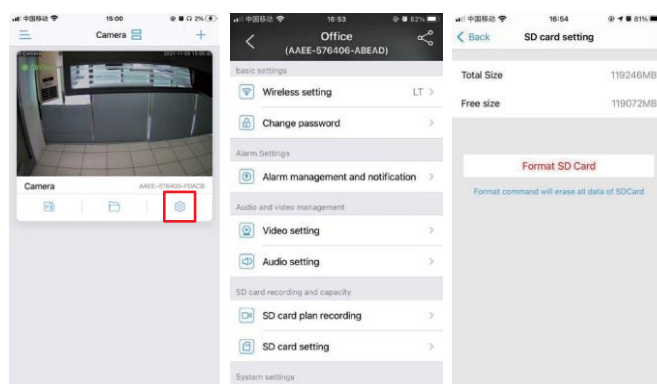
Insert SD card: Unscrew the cover clockwise and insert SD card into the slot.



► **Watching the records:** Each ten minutes the card can store video data automatically per ten minutes, click here to check these records.



► **Formatting of SD card:** Click setting icon and go to SD card setting, press format SD Card, so all data will be deleted if you need.





Contact us



+1.201.490.4499

Toll free: 1.888.333.SOLAR (7652)



contact@solarpathusa.com



www.solarpathusa.com