

HIGHLIGHT SP-EDG

Specifications



Whyus?

Innovative Technology

High-efficiency solar and advanced LEDs deliver superior performance, long life, and maximum ROI.

Photometric

We conduct photometric measurements on all our products to ensure optimal performance and compliance with industry standards

Versatile Lightning

We designs and install solar-powered lightning systems tailored for all kind of locations such as streets, parks, pathways, homes, etc.

Global Reach

Worldwide success proves our adaptability and regulatory expertise.

Sustainable Savings

These solutions enhance safety, promote sustainability and providing significant energy and cost saving.

Warranty

SolarPath is dedicated to delivering architectural and commercial-grade solar lighting that can be customized to meet specific client requests, both in technical specifications and aesthetic design, ensuring a perfect fit for a diverse range of needs.

HIGHLIGHT SP-EDG™

LED HIGH BAY

HIGH TEMP APPLICATION

◆ High Temperature

◆ Heavy Duty

Designed for operation in an environment with ambient temperature up to 100°C/212°F, The low-profile, rugged Edge fixture is a worry-free, low maintenance lamp for maximum reliability, durability and shock, vibration and vandalism resistance, even in the harshest environment.



Heavy Duty
Industry



Chemical
Industry



Metal
Treatment



Oil and Gas
Industry

The SP-EDG series high temperature LED High Bay sets the industry standard with energy efficiency and durability for the longest-lasting performance in high ambient temperature industrial applications including Manufacturing, Power Generation, Water and Wastewater, Pulp and Paper, Metals and Mining, Chemical and Petrochemical and Oil and Gas.



IP66



3G / 5G
Vibration



80°C / 176°F
100°C / 212°F
Operating Temp



5 Years
Warranty



IK10

FEATURES



Excellent thermal management system ensures stable operation at 80°C / 100°C ambient temp.



Long lasting performance L70>100,000 hours.



IP66 for wet location & IK10 impact resistant for the harshest environment.



3G or 5G vibration rated for the most challenging applications.



Hanging ring or universal bracket for any types of installation, both indoor and outdoor.



15 types of optic lens at choice.

PERFORMANCE



Philips Lumileds



4500~5500K (Standard)
2500~5500K (Optional)



≥70



L70>120,000 Hours



100-277 VAC, 277-480 VAC



0.95 min



IP66



IK10



Corrosive resistant polyester powder coat finish



Operating Temperature: 80°C (176°F)
100°C (212°F) With remote control



15% to 95% RH

Beam Angle

20 ° /30 ° /50 ° /90 ° /110 ° /150 ° /30x100 ° /60x100 °
130x70 ° /70x135 ° /75x145 ° /60x150 ° /73x133 °

Driver Brand

Meanwell-HLG/ Meanwell-HVG

THD

20% Max

Housing

Aluminum Alloy

Mount Option

Standard U Bracket(Hang Ring)



SPECIFICATIONS

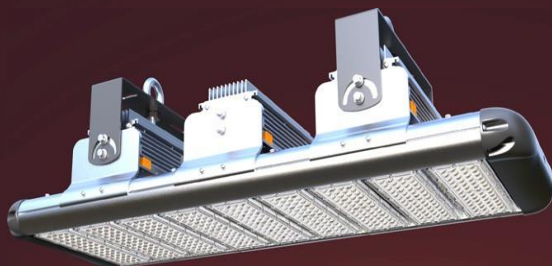
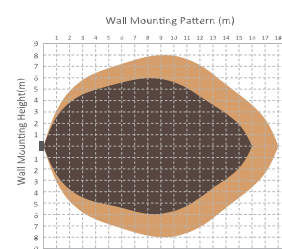
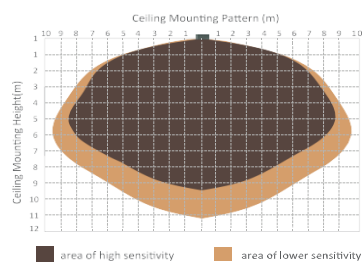
| Model | Power | Efficacy (IES) | Total Lumen | N.W | CRI | LED Chip | Product Dimensions |
|--------|-------|-------------------|----------------|----------------|-----|----------|---------------------------------|
| SP-EDG | 50W | 140lm/W | 7,000lm | 5.2kg/11.4lbs | ≥70 | Philips | 273x366x245mm 10.7x14.4x9.6" |
| SP-EDG | 100W | 140lm/W | 14,000lm | 7.8kg/17.1lbs | ≥70 | Philips | 308x366x245mm 12.1x14.4x9.6" |
| SP-EDG | 150W | 140lm/W | 21,000lm | 9.3kg/20.5lbs | ≥70 | Philips | 402x366x245mm 15.8x14.4x9.6" |
| SP-EDG | 200W | 140lm/W | 28,000lm | 10.7kg/23.5lbs | ≥70 | Philips | 496x366x245mm 19.5x14.4x9.6" |
| SP-EDG | 300W | 140lm/W | 42,000lm | 16.5kg/36.3lbs | ≥70 | Philips | 684x366x245mm 26.9x14.4x9.6" |
| SP-EDG | 450W | 140lm/W | 63,000lm | 28.0kg/61.7lbs | ≥70 | Philips | 966x366x245mm 38.0x14.4x9.6" |

Microwave Sensor & Dimmer Option

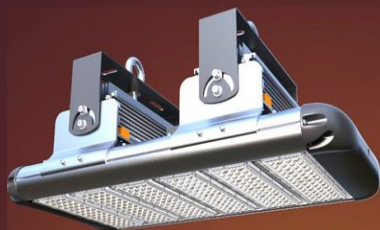


| Technical Data | | | |
|-----------------------|---|---------------------|---------------------------|
| Operating voltage | 120-277V | Standby power | Approx. 0.5W |
| Switched power | Max. capacitive load: 800W @277V, 400W@120V | Warm time | 20s |
| Detection Data | 10/50/75/100% can be customized | Sensor principle | Microwave motion detector |
| Hold time | 5S/30S/1min/5min/10min/20min/30min, can be customized | Microwave frequency | 5.8GH+/-75MHz |
| Standby period | 0s/10s/1min/5min/10min/30min/1h/ can be customized | Microwave power | <0.2mw |
| Standby dimming level | 10%/20%/30%/50% can be customized | Detection range | Max. (φxH):18m x 10m |
| Daylight threshold | 2-50lux daylight/twilight/darkness, can be customized | Detection angle | 30°-150° |
| Operating temperature | -35°C-70°C (-31°F-158°F) | Mounting height | Max. 10m |
| IP Rating | IP20, IP65 (mounting in Hytronik special box) | Certificate | ETL, FCC |

Detection Pattern



9 Modules ~ 450W



6 Modules ~ 300W



4 Modules ~ 200W

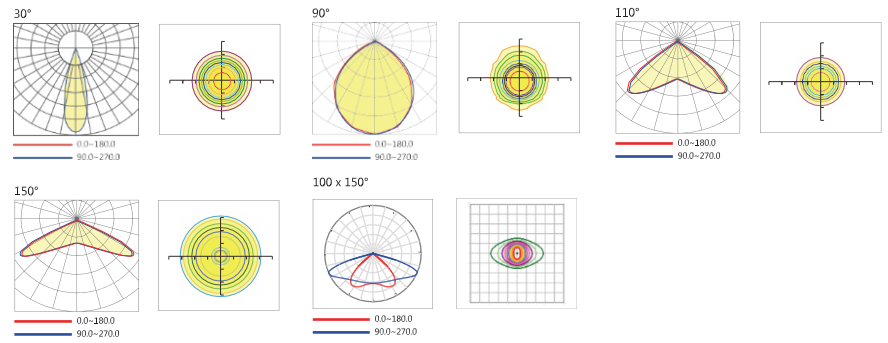
3 Modules ~ 150W

2 Modules ~ 100W

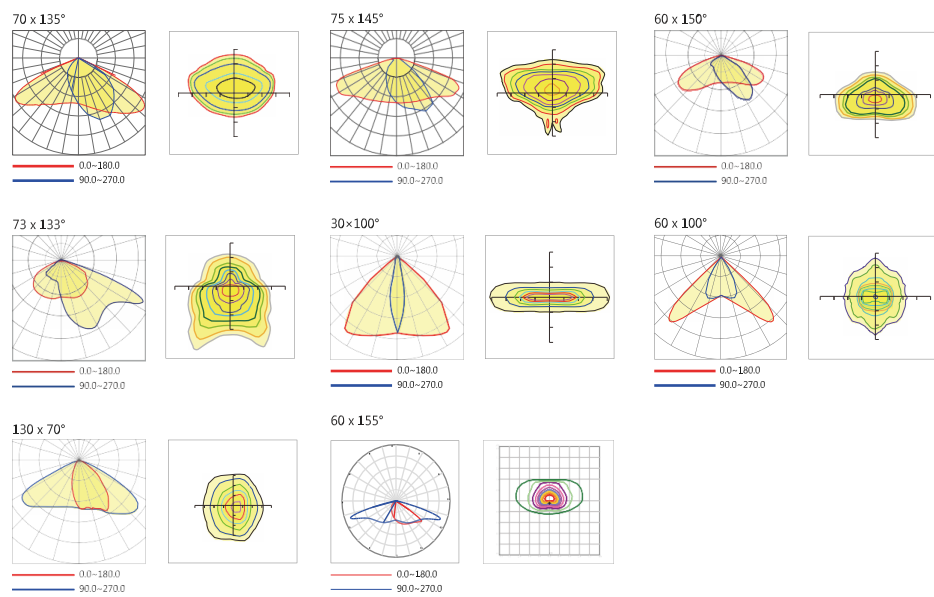
1 Module ~ 50W

PHOTOMETRICS

Round Light Spot



Rectangular Light Spot



INSTALLATION

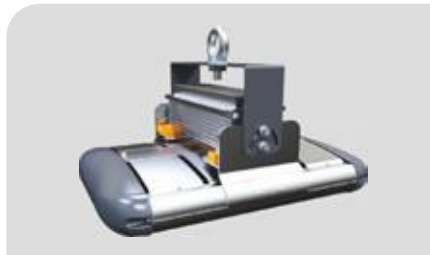
For high performance and long term reliability, the light should be installed in free air.

Hanging Ring Mount

1. Tighten the NUT attached to the hanging ring to ensure the hanging ring is securely connected to the light fixture.
1. Hang the ring to the field supplied by the mounting hook or chain.
2. Wiring.(Connect supply wires to luminaire wire leads per the wiring diagram using methods that comply with all applicable codes.)

Universal Bracket

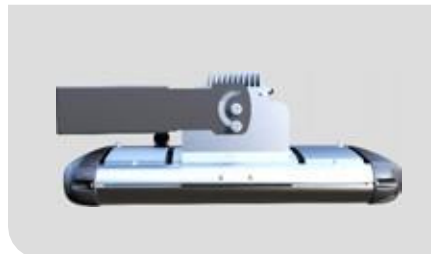
1. Rotate the bracket to the desired angle and tighten screw to lock it.
2. Bolt the universal mounting bracket to the field mounting point. Bolt the center point before the two side points. Tighten the bolts to wrench tight.
3. Wiring.(Connect supply wires to luminaire wire leads per the wiring diagram using methods that comply with all applicable codes.)



Hanging Ring



180°U Bracket



360°Heavy Duty U Bracket



360°Heavy Duty U Bracket + Slip Fitter

SOLAR STREET LIGHT

USES AND APPLICATIONS GUIDE

| | |
|--------------|--|
| Sport Fields | |
| Warehouses | |
| | |

ORDERING GUIDE

Ordering Guide: EXAMPLE: HIGHLIGHT SP-EDG-50W-HB-00-1-20D-30-1-1-BLK-U-00

| Model | LED Power | Luminaires | Dimmability | LEDs | Distribution type | LED Color Temp | Driver | Input Voltage | Fixture color | Mounting options | Options |
|------------------|---|--------------|--------------------------------|--------------------|--|--------------------------|-------------|---------------------------------|-------------------------------------|-------------------------------|--|
| HIGHLIGHT SP-EDG | 50W 100W 150W 200W 300W 450W | HB- High bay | 00-Non Dimmable 01-Dimmable | 1-Philips lumileds | 20D- 20 ° 30D- 30 ° 50D- 50 ° 90D- 90 ° 110D- 110 ° 150D- 150 ° 30/100- 30x100° 60/100-60x100° 130/70- 130x70° 70/135- 70x135° 75/145- 75x145° 60/150- 60x150° 73/133- 73x133° | 30K 40K 50K 55K | 1- Meanwell | 1- AC 100-277V 2- AC200-480V | BLK-Black GR-Grey BRZ- Bronze | U- U bracket HR- Hang ring | 00- No motion sensor 01- With motion sensor 02-Photocell 03- Remote control |



Contact us



+1.201.490.4499

Toll free: 1.888.333.SOLAR (7652)



contact@solarpathusa.com



www.solarpathusa.com