

# HIGHLIGHT NPSL Specifications



## Why us?

### **Innovative Technology**

High-efficiency solar and advanced LEDs deliver superior performance, long life, and maximum ROI.

### **Photometric**

We conduct photometric measurements on all our products to ensure optimal performance and compliance with industry standards

### **Versatile Lighting**

We design and install solar-powered lighting systems tailored for all kinds of locations such as streets, parks, pathways, homes, etc.

### **Global Reach**

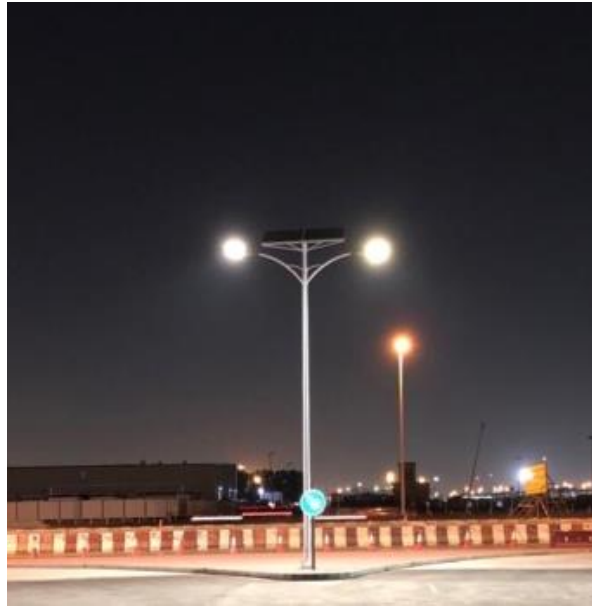
Worldwide success proves our adaptability and regulatory expertise.

### **Sustainable Savings**

These solutions enhance safety, promote sustainability and provide significant energy and cost savings.

### **Warranty**

SolarPath is dedicated to delivering architectural and commercial-grade solar lighting that can be customized to meet specific client requests, both in technical specifications and aesthetic design, ensuring a perfect fit for a diverse range of needs.



The SolarPath HIGHLIGHT NPSL™ is the premier LED solar illumination technology in its class today. Ultra-bright/High Intensity LED lighting means a total lighting solution for any need. This product has both a solar engine and a street light. The HL-NPSL's battery and control is on the LED head which allows this product to be used for parks, roads, path. Once the product is installed, it can be controlled via a remote control.

## Technical specification

<b>Solar Module Parameters</b>	Type	High-efficiency Monocrystalline Silicon
	Power	450W
<b>Solar Charge Controller</b>	MPPT (Maximum Power Point Tracking), infrared solar charging controller	
<b>Battery</b>	LifePO	Up to 200AH
<b>LED Light Parameters</b>	Light Source Power	Up to 150W (Up to 25,500 lm)
	CCT (Correlated color temperature)	3,000K-6,000K
	CRI (Color rendering index)	<u>&gt;81</u>
<b>Control Modes</b>	Manual ON/OFF / Automatically ON/OFF / Time Control	
<b>Working Mode</b>	Depend on installation area, can be programed with remote control	
<b>IP Rating</b>	IP67	
<b>Motion Sensor</b>	PIR/ Microwave Optional	
<b>Material</b>	Aluminum Die-casting	
<b>Extended Application</b>	Wireless Remote controller	
<b>Optional</b>	GPRS Integrated Management System( Remote control and monitoring)	

Type A



Type B



## SOLAR STREET LIGHT

USES AND APPLICATIONS GUIDE	
Streets Lighting	V
Parking Lots	V
Residential Roads	V
Public Parks	V
Sports Lighting	V

## ORDERING GUIDE

Ordering Guide: NPSL-A-120W-A-30W-1-30K-24AH-1-GR-00

Model	Solar Panel Quantity	Solar Panel	LED Type	Led Power	Distribution Type	Led Color Temp	Battery options	Arm	LED Body color	Motion Sensor
NPSL	A – 1	120W		30W	1 – Type I	30K	24AH	1 – Single	GR - Grey	00 – no motion sensor
	B – 2	150W		50W	2 – Type II	40K	36AH	2 - Double		01 – motion sensor
		200W		60W	3 – Type III	50K	42AH			
		250W		80W	4 – Type IV	60K	60AH			
		260W		100W	5 – Type V		100AH			
		300W	120W	120AH						
		360W	150W							
		450W								

Legal Clarification: All technical information and/or products listings and/or technical support, and/or any kind of graphics, illustrations and/or instructions and/or the names, trade names, trademarks, trade symbols, service marks, logos, icons and trade dress of SolarPath Inc or in connection to SolarPath Inc or any of its selling products, contained herein is in the exclusive ownership of SolarPath Inc and may not be alternated and/or used in any manner including but not limited to copy of some or all of the said material by users and/or viewers or any third party for that matter of this document and the website to which it is linked without the express prior written permission of SolarPath Inc. Furthermore, redistribution or any kind of commercial use or alternation or any kind of use other than downloading presented information in some or all contents of downloadable documents, and/or downloadable contents, is strictly prohibited without express written prior permission. All information set out herein is subject to changes as may occur from time to time. SolarPath Inc is not responsible for, and cannot guarantee and shall not be held liable for any information or the accuracy of such in websites that it does not manage



## Contact us



+1.201.490.4499

Toll free: 1.888.333.SOLAR (7652)



[contact@solarpathusa.com](mailto:contact@solarpathusa.com)



[www.solarpathusa.com](http://www.solarpathusa.com)