

# HIGHLIGHT HL-FL-AUR

## Installation Manual



## Why us?

### **Innovative Technology**

High-efficiency solar and advanced LEDs deliver superior performance, long life, and maximum ROI.

### **Photometric**

We conduct photometric measurements on all our products to ensure optimal performance and compliance with industry standards

### **Versatile Lighting**

We design and install solar-powered lighting systems tailored for all kinds of locations such as streets, parks, pathways, homes, etc.

### **Global Reach**

Worldwide success proves our adaptability and regulatory expertise.

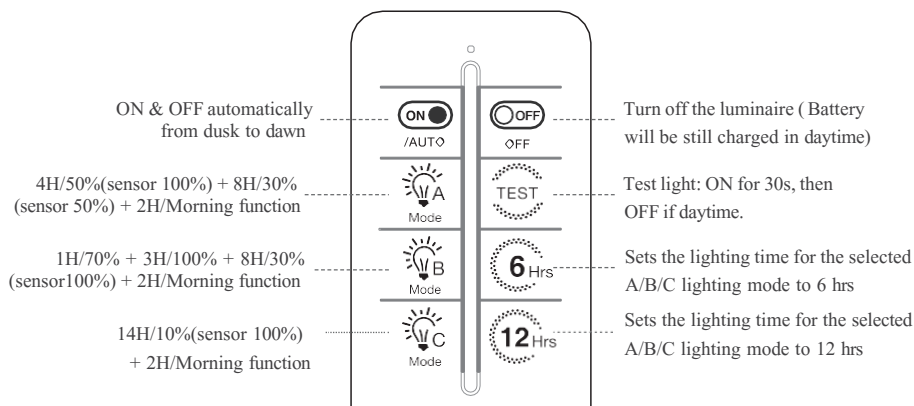
### **Sustainable Savings**

These solutions enhance safety, promote sustainability and provide significant energy and cost savings.

### **Warranty**

SolarPath is dedicated to delivering architectural and commercial-grade solar lighting that can be customized to meet specific client requests, both in technical specifications and aesthetic design, ensuring a perfect fit for a diverse range of needs.

## REMOTE CONTROL (OPTIONAL)



### Note :

1. Turn on switch button in the solar light before use.
2. Default lighting mode: A.
3. 2H/Morning function = 2H before dawn @40% constant output.
4. Modes A/B/C programs could be changed prior to notice, pls be subject to the sticker at backside of remote.
5. Press OFF to turn off light (Charging will be still functional), Press ON restores last setted mode.
6. 6Hrs/12Hrs : Set duration for current mode (A/B/C). Press mode button (A/B/C) again to reset to default time.

### Example

$$\begin{aligned} \text{Mode A} &= 4\text{H}/50\%(\text{sensor } 100\%) + 8\text{H}/30\%(\text{sensor } 50\%) + 2\text{H}/\text{Morning function} \\ \text{Mode A} + 6\text{Hrs} &= 4\text{H}/50\%(\text{sensor } 100\%) + 2\text{H}/30\%(\text{sensor } 50\%) \\ \text{Mode A} + 12\text{Hrs} &= 4\text{H}/50\%(\text{sensor } 100\%) + 8\text{H}/30\%(\text{sensor } 50\%) \end{aligned}$$

Please note that mode settings (A/B/C) may be updated without prior notification.  
Please always refer to the label information of the actual remotes you receive.

## MATERIALS IN PACKAGE



Solar Light 1pc

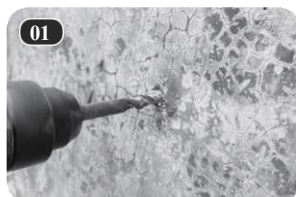


6.56' \* 0.09ft² solar cable

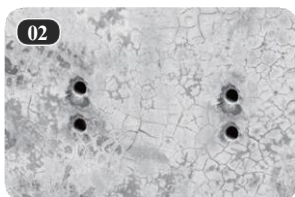


Remote Control (Optional)

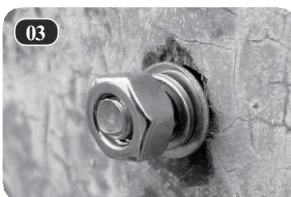
## INSTALLATION STEPS



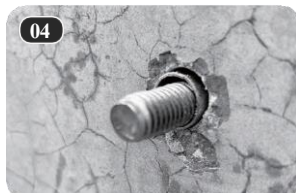
1. Measure the holes from the light bracket and make two marks to drill.



2. Drill 2 holes with an M10 drill bit on the surface according to the two marks.



3. Place the expansion screw into the hole.



4. Remove the shrapnel, washer, and the nut from screws.



5. Place the light bracket over the fixings.



6. Place the light bracket over the fixings, replace washers.



7. Tighten the two nuts with wrench.



8. Install the flood light and adjust the light direction as needed. Tighten the fixings.



9. Install the solar panel bracket onto the solar panel, adjust the angle, and then secure it with screws.



10. Install the solar panels in the location, and make sure solar panel is exposed to full sunlight.



11. Connect the adapter cable between the solar floodlight and the solar panel. Insure that this waterproof connection is secured.

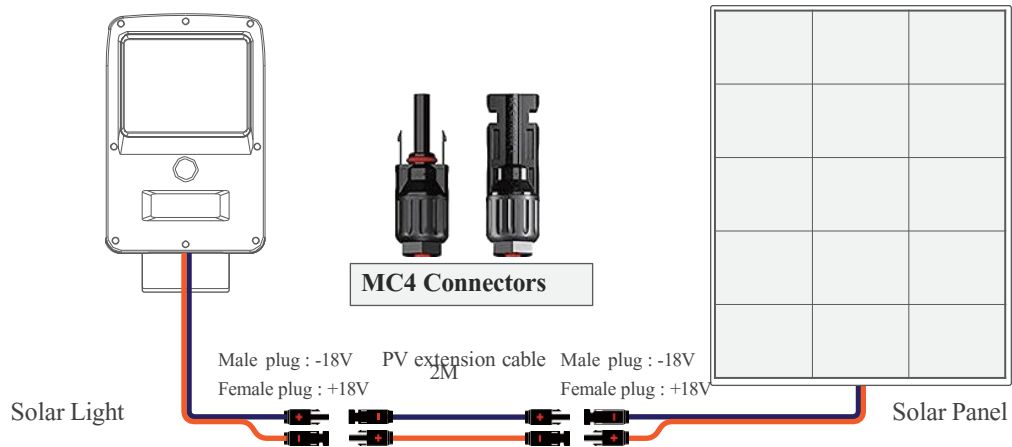


12. Turn on the light switch and use the remote control to set the desired lighting effect.

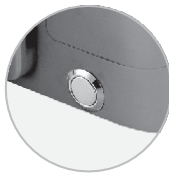
## Installation Tips

We recommend you always try to install this solar floodlight a place where the solar panel is exposed to direct sunlight in order to achieve maximum performance. The working time of the solar flood light is directly related to the solar panel's exposure to sunlight. The performance will be affected by weather and season. Under manual mode, this light can also work in the day time when the solar panel is charging the light. This function is designed to provide lighting to the places where there is never daylight, like warehouses, wine caves etc. Please do not forget to clear the solar panel after a while when it gets dirty.

## WIRING CONNECTION



## Button Switch



OF

O

The button should be at ON position to active the whole system.

## REGULAR TROUBLE SHOT

Problem	Reason	How to solve
Light is off	Switch is off	Turn on the on/off switch of light
	No direct sunshine	Move the light to the direct sunny area
	Continuous cloudy or rainy days	Light will back to work when sun returns
	There is debris on solar panel	Clean the solar panel
Short working time	Location problem	Move the light to the area with direct sunshine
	Continuous cloudy or rainy days	Light will be recharged when sun returns
	Battery life is expired	Replace with a new battery



## Contact us



+1.201.490.4499

Toll free: 1.888.333.SOLAR (7652)



[contact@solarpathusa.com](mailto:contact@solarpathusa.com)



[www.solarpathusa.com](http://www.solarpathusa.com)