

# Installation manual

## 2SPBL20



# Whyus?

## **Innovative Technology**

High-efficiency solar and advanced LEDs deliver superior performance, long life, and maximum ROI.

## **Photometric**

We conduct photometric measurements on all our products to ensure optimal performance and compliance with industry standards

## **Versatile Lightning**

We designs and install solar-powered lightning systems tailored for all kind of locations such as streets, parks, pathways, homes, etc.

## **Global Reach**

Worldwide success proves our adaptability and regulatory expertise.

## **Sustainable Savings**

These solutions enhance safety, promote sustainability and providing significant energy and cost saving.

## **Warranty**

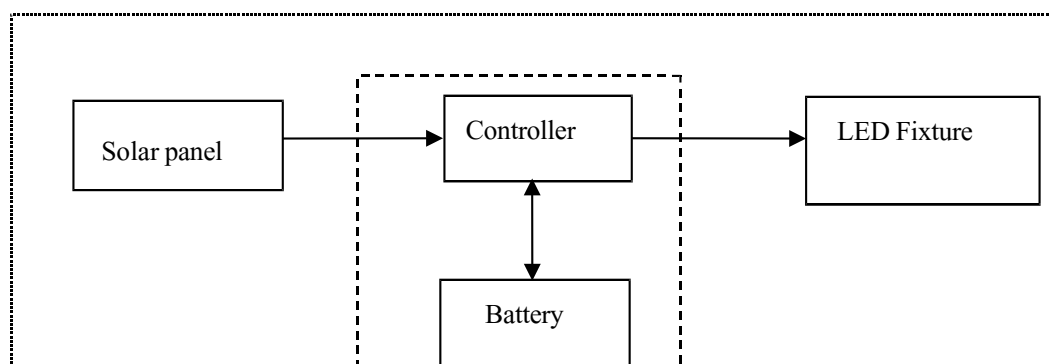
SolarPath is dedicated to delivering architectural and commercial-grade solar lighting that can be customized to meet specific client requests, both in technical specifications and aesthetic design, ensuring a perfect fit for a diverse range of needs.

## Product image



## Work Principle

Under sunshine, solar panel convert energy to battery storage, then output via controller, drive LED light power as below.

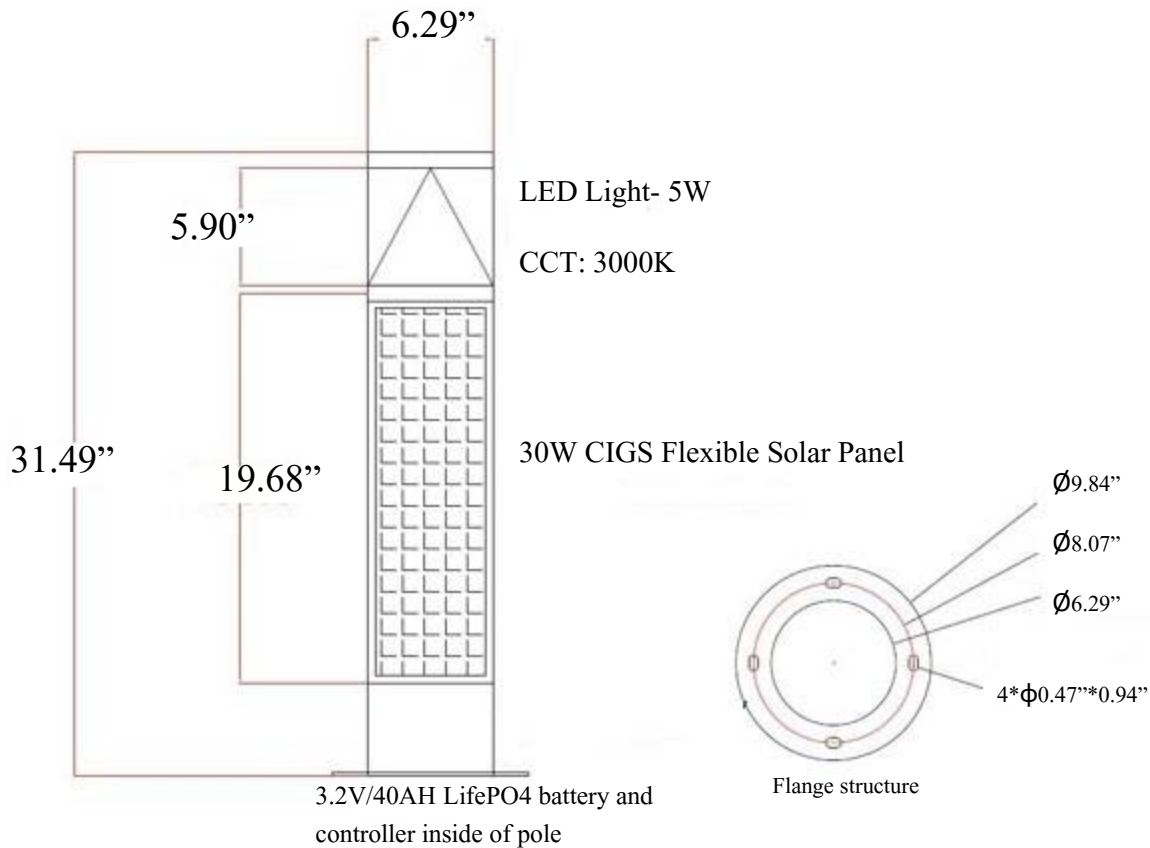


## Specifications

NO.	Item	Specifications
1	Light power	5W,CCT 3000K
2	Battery	LifePO4 battery capacity: 3.2V/40Ah; install inside of bottom pole
3	Solar panel	30W CIGS flexible solar panel with mold
4	Pole	Coated with hot galvanized and electrostatic spraying process black finished.
6	Work Temp	-4°F ~ 122°F
7	Wind resistance	27m/s (10 gales)
8	Switch model	Light control and time control
9	Controller	MPPT controller install inside of bottom pole With Remote controller

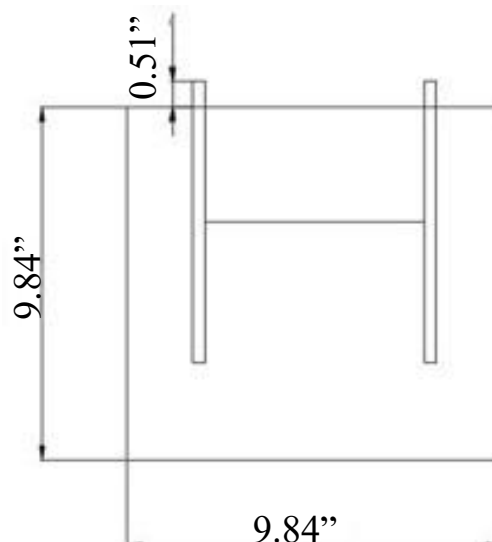
## Installation

Before installation, prepare wrench, thin steel to drag off cable from inside of pole, protect pads etc to protect pole and solar panel. (better to install under good sunshine)

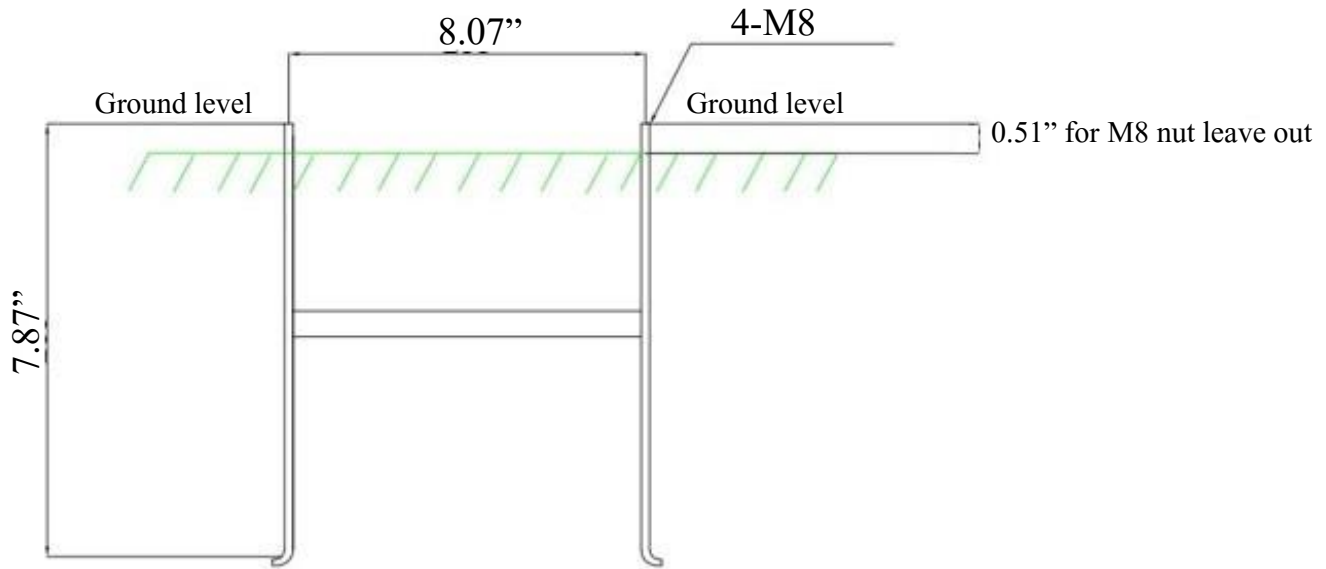


## Concrete and anchor bolt installation

1. Dig one ditch W9.84" \* H9.84"



2. Put foldable anchor bolt into ditch , leave screw bolt 13mm on ground to fix with screws:



3. Fill soil and concrete back to ditch;
4. Use rubber lip to cover screws;
5. Turn on light through switch button on top of Fixture or use remote controller to power on.



(Switch button on LED fixture)



(Remote controller)

(Note: Light power on base on solar panel in dark surrounding)

## Pole Installation

Prepare wrench before installation.

- 1 Before pole installation, confirm light and solar panel position. Connection(Bar) of solar panel towards back side of sunshine).
- 2 Fix pole on anchor bolt.
- 3 Place flat washer through stud on whole light base and secure with nut lock. Use the pendant to adjust to ensure that the light pole is installed vertically.
- 4 Fix cover on anchor bot.

## Notice

- Solar-powered LED street light run on the sun, and should be installed wherever possible in areas with good sunlight.
- Installation environment should not be shade or building shade, otherwise it will cause the lack of solar power and turn off the lights, long-term on the service life of lamps and lanterns will also bring adverse effects.
- Take care to install the whole light, preventing it from colliding with the thin-film solar panel and causing damage.
- Lamp and solar pane surface are fragile and cannot be touched by sharp objects or struck by gravity.



## Contact us



+1.201.490.4499

Toll free: 1.888.333.SOLAR (7652)



[contact@solarpathusa.com](mailto:contact@solarpathusa.com)



[www.solarpathusa.com](http://www.solarpathusa.com)