

HIGHLIGHT SPSSB



The SolarPath HIGHLIGHT SPSSB™ is the most advanced and sophisticated solar light pole available on the market. The solar light pole is completely off-grid and works autonomously, using sustainable solar power. This means there is no need for expensive cabling and invasive trenching, which results in fast installation, easy operation and a low total cost of ownership. The curved vertically integrated solar panels are wind-resistant and self-cleaning, as dirt and dust cannot stick on the design. Solar energy generated during the day is stored in high-quality lithium batteries, which are long-lasting and require minimum maintenance. The highly-efficient LED-luminaire provides powerful lighting at night.

Key features

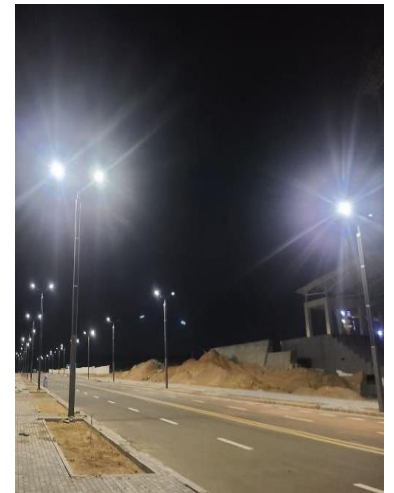
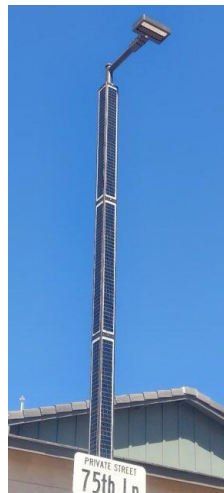
- Low installation and maintenance costs.
- Weather-proof and UV- proof.
- IP Rating IP65
- High LED performance
- LED's operation life time over 70,000 hours.
- Light dimming engine.
- LED strings shunt protection.
- Battery inside pole.
- Wind- resistant and self-cleaning.
- Coated with electrostatic spray for anti-salted, anti-acid, rust resistant.
- Double layer: steel hot galvanized + aluminum.
- Approved by IDA.

Technical Specifications

Solar Module Parameters	Type	Monocrystalline Silicon
	Power	Up to 1,120W(4x280W each)
Solar Charge Controller Parameters	Type	MPPT
	Battery type and parameters	Up to 100AH
LED Light Parameters	Light Source Power	Up to 150W
	Brightness	Up to 21,000 lm
	CCT (Correlated Color Temperature)	3,000K-5,700K
Operation profile	Programmable, depend on solar radiation.	
Operation Temperature	-4°F-131°F	
Pole Height	Up to 30 Ft	

Uses and Applications Guide

Streets lighting	●
Parking lots	●
Walking/bike path	●
Branch roads	●
Residential roads	●
Public parks	●



Ordering Guide: EXAMPLE: HIGHLIGHT SPSSB-A-180W-FLA-30W-1-30K—60AH-GR-00

Model	Solar Panel Quantity	Solar Panel	LED Head	Led Power	Distribution Type	Led Color Temp	Battery capacity	LED Body color	Options
HIGHLIGHT SPSSB	A-1 panel	60W	FLA	30W	1 – Type I	30K	30AH	GR- Grey BR- Brown *other colors are available	00 – No motion sensor 01 – With motion sensor
	B-2 panels	80W	FLB	40W	2 – Type II	40K	40AH		
	C-3 panels	100W		60W	3 – Type III	50K	60AH		
	D- 4 panels	120W		80W	4 – Type IV	57K	80AH		
		200W		90W	5 – Type V		100AH		
		240W		120W					
		280W		150W					



*Up on request

Legal Clarification: All technical information and/or products listings and/or technical support, and/or any kind of graphics, illustrations and/or instructions and/or the names, trade names, trademarks, trade symbols, service marks, logos, icons and trade dress of SolarPath Inc or in connection to SolarPath Inc or any of its selling products, contained herein is in the exclusive ownership of SolarPath Inc and may not be alternated and/or used in any manner including but not limited to copy of some or all of the said material by users and/or viewers or any third party for that matter of this document and the website to which it is linked without the express prior written permission of SolarPath Inc. Furthermore, redistribution or any kind of commercial use or alteration or any kind of use other than downloading presented information in some or all contents of downloadable documents, and/or downloadable contents, is strictly prohibited without express written prior permission. All information set out herein is subject to changes as may occur from time to time. SolarPath Inc is not responsible for, and cannot guarantee and shall not be held liable for any information or the accuracy of such in websites that it does not manage