

LED AREA LIGHT

SRS Series



FEATURES & BENEFITS

- High lumen output and high mounting height solution.
- IP 66 Die cast housing
- Sleek low profile design, low EPA rating.
- Corrosion resistant polyester.
- Safety cable.
- Photocell and Motion sensor (optional).
- Captured screw.
- Anti-Condensation Valve.
- Electrical/Control: 100-277VAC and 277-480VAC available.
Surge protection: - 10kV Standard
- 20kV Optional

CERTIFICATIONS

ETL/DLC

SRS series area light is perfect for outdoor area lighting, providing significant energy and maintenance savings while improving illumination performance.

TECHNICAL PARAMETERS

Power	40-150W
Input	100-277V/277-480V
PF	>0.9
L85	>50,000H
Operating Temperature	-40°F- 104°F
Efficacy	130-140lm/W
ANSI CCT	3000K/4000K/5000K
Min CRI	≥70
LED Module IP Rating	IP67
SPD	Optional
Motion sensor	Optional
Photocell	Optional
Optic (IESNA)	Type II, Type III, Type IV, Type V
Color Options	Dark Bronze/Grey/Black/White

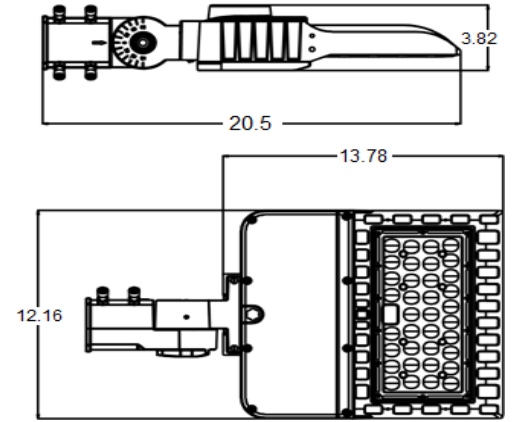
ORDERING INFORMATION

Example :SP-ELF-40W-A-DAM-2-30K-BZ-00

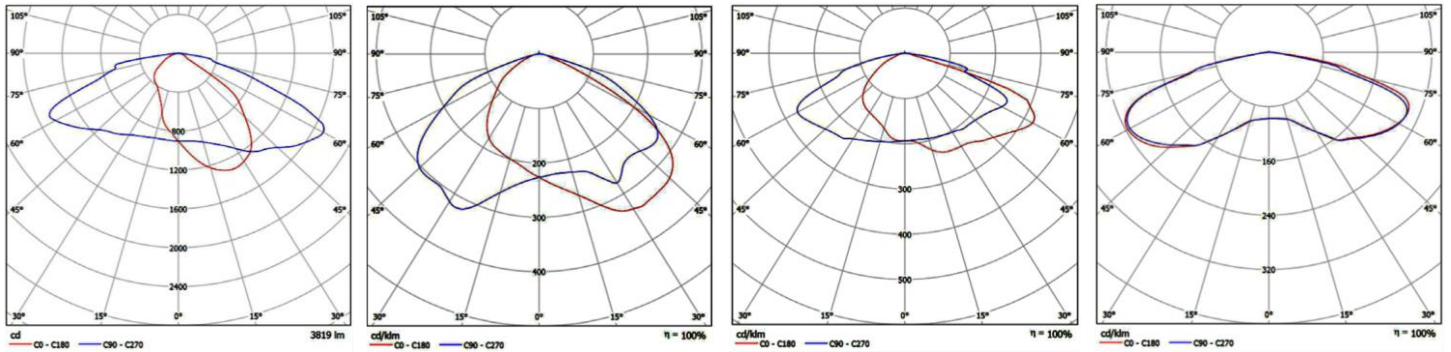
MODEL (Nominal Power)	A/B	MOUNTING	OPTIC LENS	CCT (ANSI)	OPTIONAL COLOR	LIGHTING CONTROL
40W	A	DAM-Square pole and 3.93in	2-Type II	30K	★ BZ	00
75W	100-277V	round pole	3-Type III	40K	GR	Not required
100W	B	SLI- Slip Fitter	4-Type IV	50K	BLK	01
120W	277-480V	TRU- Trunnion	5-Type V		WH	Photocell
150W		U- U Bracket				02 Motion Sensor

Product parameters

Model	SP-ELF Series
Net Weight	5.2kg/ 11.46lb
Gross Weight	6.2kg/ 13.66lb
Product Dimension	520.7*308.9*97.1(mm) 20.5*12.16*3.82(in)
EPA	0.36



Photometric



Type2

Type3

Type4

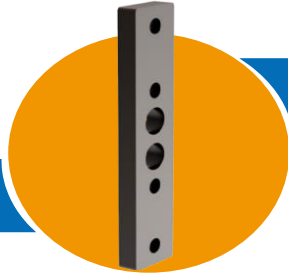
Type5

Effective Projected Area

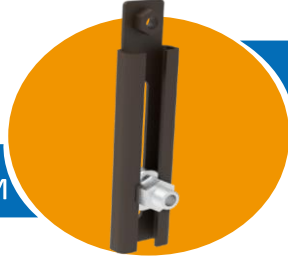
EPA(Sq.Ft.)	Configuration	Weight(Lbs.)
0.36	1	11.46
0.72	2@180	22.92
0.62	2@90	22.92
0.98	3@90	34.38
0.87	3@120	34.38
0.98	4@90	45.84

Accessories

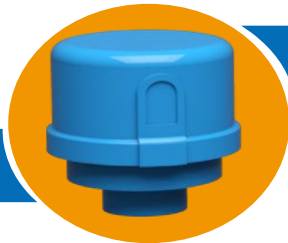
Standard Adaptor For DAM



Adjustable Adaptor For DAM



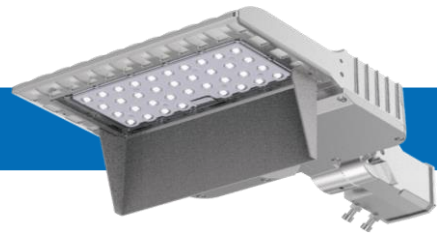
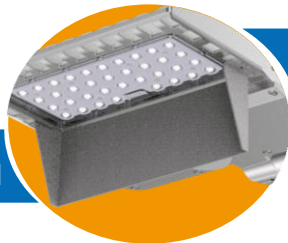
Photocell Optional



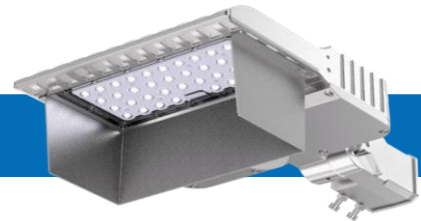
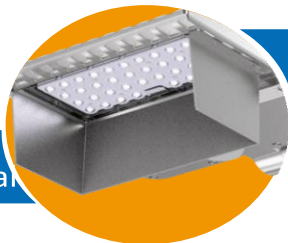
Motion Sensor Optional



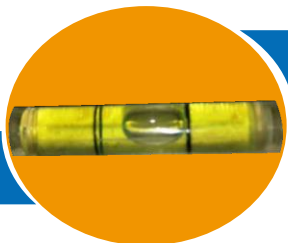
Back Light Shield Optional



Full light Spill Shield Optional



Level



Installation Options

