

# LED AREA LIGHT

## SRL Series



SRL series area light is perfect for outdoor area lighting, providing significant energy and maintenance savings while improving illumination performance.

## FEATURES & BENEFITS

- High lumen output and high mounting height solution.
- IP 66 Die cast housing
- Sleek low profile design, low EPA rating.
- Modular design, easy for installation, replacement and maintenance.
- Compartment release for wiring and service..
- Photocell and Motion sensor (optional).
- Mounting: 2.36 in standard mounting diameter.  
11 kinds of mounting options.
- Anti-Condensation Valve.
- Electrical/Control: 100-277VAC and 277-480VAC available.  
Surge protection: - 10kV Standard  
- 20kV Optional

## CERTIFICATIONS

ETL/DLC

## TECHNICAL PARAMETERS

Power	60-150W
Input	100-277V/277-480V
PF	>0.9
L85	>50,000H
Operating Temperature	-40°F- 104°F
Efficacy	140-160lm/W
ANSI CCT	3000K/4000K/5000K
Min CRI	≥70
LED Module IP Rating	IP66
SPD	Optional
Motion sensor	Optional
Photocell	Optional
Optic (IESNA)	Type II, Type III, Type IV, Type V
Color Options	Dark Bronze/Grey/Black/White

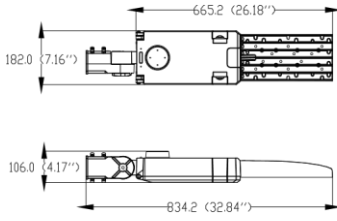
## ORDERING INFORMATION

Example :SP-ELF-L-60W-A-SLA-2-30K-BZ-00

Model (Nominal Power)	A/B	MOUNTING	OPTIC LENS	CCT (ANSI)	OPTIONAL COLOR	LIGHTING CONTROL
60W	A	SRA- 2.36 in Round Tenon	2-Type II	30K	★ BZ	00
80W	100-277V	SRB- 1.57in Round Tenon	3-Type III	40K	GR	Not required
100W	B	SRC- 1.96in Round Tenon	4-Type IV	50K	BLK	01
120W	277-480V	SRD- Square pole	5-Type V		WH	Photocell
150W		SRE- 3.93in Round pole				02
		TRU- Trunnion				Motion Sensor
		SHA- 2.36in Round Tenon				03
		SHB- 1.57in Round Tenon				Smart Control
		SHC- 1.96in Round Tenon				
		SHD- Square and Round pole				
		SHE- Square and Round pole				

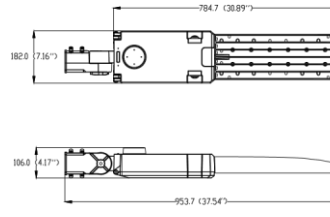
## Product parameters

### Model 60/80/100



<b>Net Weight</b>	7.5kg/16.5lb
<b>Gross Weight</b>	8.7kg/19.2lb
<b>EPA</b>	0.63
<b>Product Dimension</b>	834.2*182*106(mm) 32.84*7.16*4.17(in)
<b>Carton Dimension</b>	965*305*215(mm) 38.0*12.0*8.5(in)

### Model 120/150



<b>Net Weight</b>	8.5kg/18.7lb
<b>Gross Weight</b>	9.9kg/21.8lb
<b>EPA</b>	0.7
<b>Product Dimension</b>	953.7*182*106(mm) 37.54*7.16*4.17(in)
<b>Carton Dimension</b>	1085*305*215(mm) 42.7*12.0*8.5(in)

### EPA(Sq.Ft.) Configuration Weight (Lbs)

0.63	1	16.5
1.26	2@180	33.0
0.82	2@90	33.0
1.44	3@90	49.5
1.26	3@120	49.5
1.44	4@90	66.0

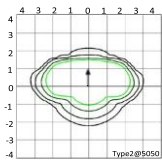
### EPA(Sq.Ft.) Configuration Weight (Lbs)

0.7	1	18.7
1.4	2@180	37.4
0.88	2@90	37.4
1.58	3@90	56.1
1.38	3@120	56.1
1.58	4@90	74.8

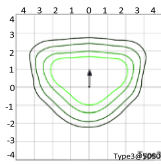
## Photometric

### LEGEND

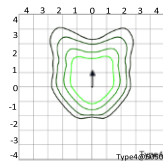
0.1 fc
0.2 fc
0.5 fc
1.0 fc



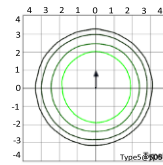
Type2



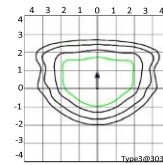
Type3



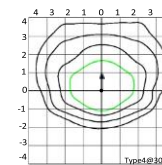
Type4



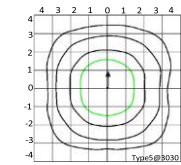
Type5



Type3

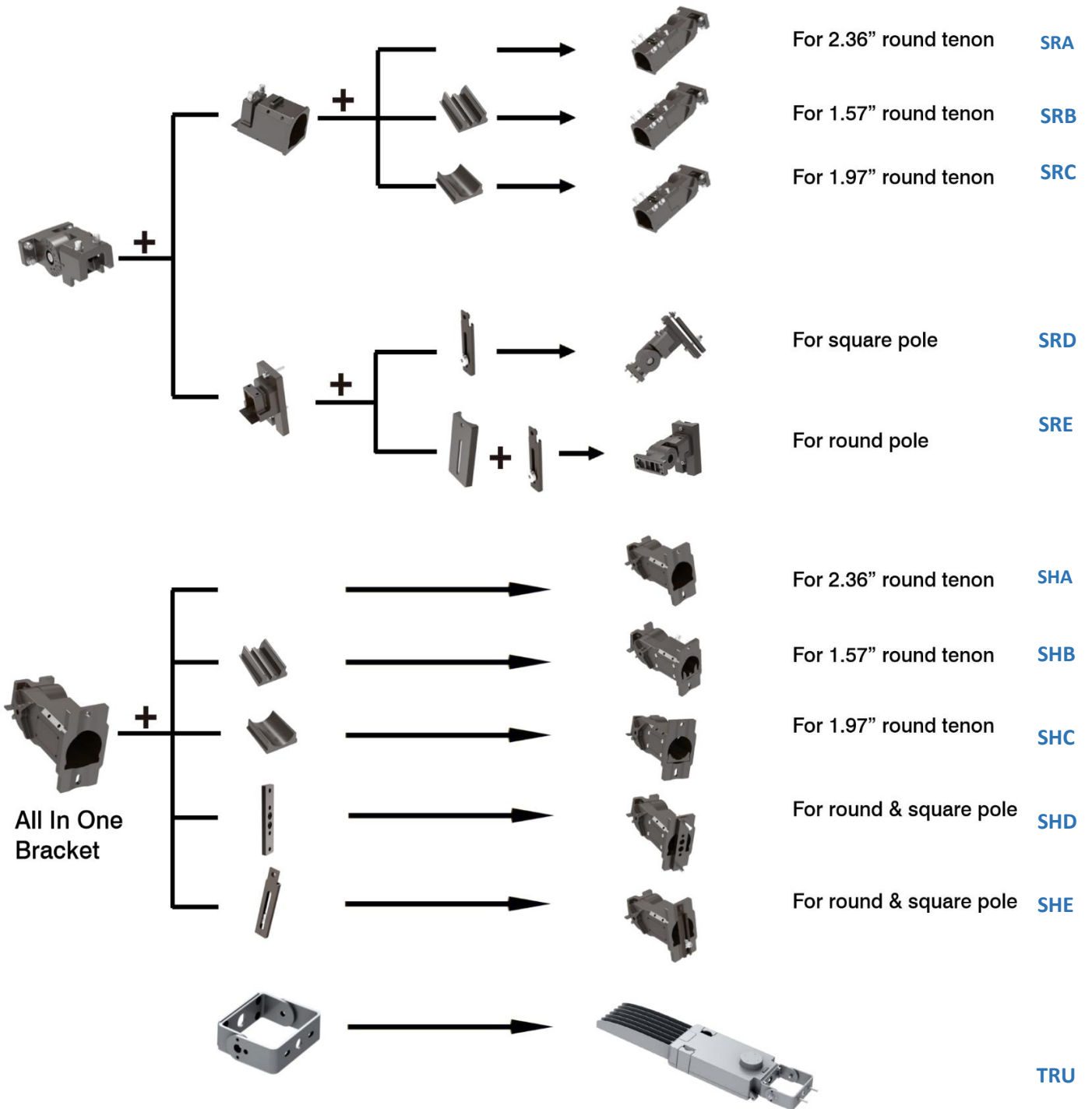


Type4



Type5

## Installation Bracket Options



---

## Accessories

**Photocell**



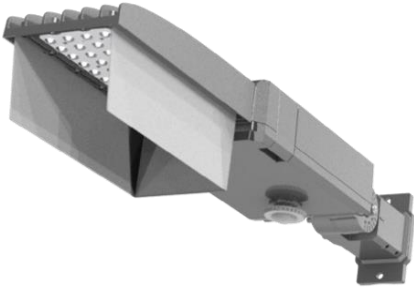
**Motion Sensor**



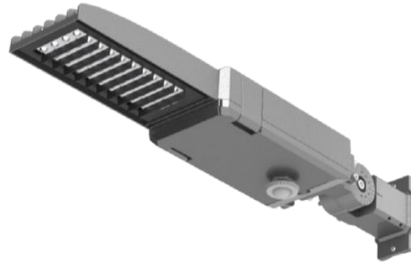
**Intelligent Controller**



## Light Shield



**Full light Spill Shield**



**Back Light Control**