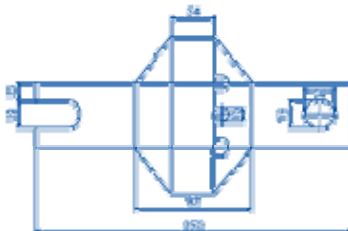
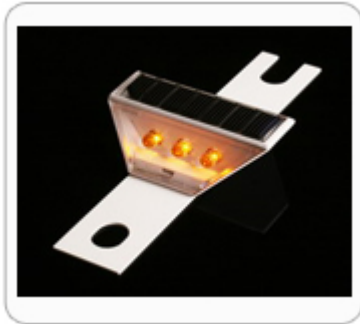


Lightmark M1 (also known as the "Butterfly") is a unique product designed for the marking of any road structure or obstacle that requires driver's attention such as:

- Lane dividers
- Fences
- Utilities poles
- Emergency call boxes and more...

Lightmark M1 comes in a variety of LED colors, steady or flashing configurations and with or without a passive reflective surface.



Technical specifications

General			
Model No.	SPLM05C000		
Dimension	Length 9"7/8" 135mm	Width 4"1/2" 90mm	Height 1"3/4" 45mm
Weight	0.7lbs / 320g		
Materials			
Top and Front cover	Poly carbonate		
Sealing	Silicone		
Body	Steel plate (SS41)		
Operation			
Illumination Technology	Ultra-bright LEDs. Φ10mm L.E.D. x 3		
On / Off Level	150Lux / 370Lux		
Charging Time ²	3 to 8 hours (weather dependant)		
Operating Time (per full charge) ²	Up to 12 hours		
Light visibility distance ¹	Up to 1.600ft (500m) (weather dependant)		
Available Standard Flash Patterns	Steady , Flashing		
Flash intervals (Flashing models)	60/min. or 120/min.		
Solar Energy			
Type	Mono-Crystalline panel		
Maximum output power	336mW		
Current	130mA		
Voltage	2.5v		
Energy Storage			
Type	Ultra capacitor		
Lifespan ²	Up to 10 years		
Normal Voltage	2.3V		
Capacity	1 X 120F		
Environmental			
Temperature Range	-13F to +140F / -25C to +60C		
Waterproof	IP 67		
Lighting Properties			
Model	Luminance ³ (Lux)		
	Max.	Avg.	Min.
Steady (white)	41.1	38.8	36
Flashing (white)	51.6	42.3	43.1
Available light colors	White, Blue, Red, Green, Amber		
¹ Actual range is dependant on type, intensity, as well as LED lens color.			
² Consistent ambient temperatures below -25C (-13F) may affect overall capacitor life temperatures above +85C (+185F) may affect output.			
³ Luminance (cd/m ²) measurement: The luminance of 9 points on the lighting area measured and averaged.			
All specifications are subject to change without notice.			

Uses and applications

- ✓ Lane dividers
- ✓ Fences
- ✓ Highway exit Shock absorbers
- ✓ Utility poles
- ✓ On/Off ramps
- ✓ Bridges and many more!

Legal clarification:

The items and/or products and all information concerning such as outlined in this datasheet are brought to you by the manufacturer. All items and/or models if indeed elaborated are subjected to changes as may occur from time to time. The Company's, licensors' or other third party materials, services or products referenced on this datasheet are registered trade marks or service marks of such parties.